

Operating Instructions

Wet/Dry Vacuum Cleaner

wetCAT 120 RH

wetCAT 131 IRH



wetCAT 120 RH



wetCAT 131 IRH

WETCAT - SERIES

Imprint

Product identification

Wet/Dry Vacuum Cleaner	Item number
wetCAT 120 RH	7002110
wetCAT 131 IRH	7002115

Manufacturer

Stürmer Maschinen GmbH
Dr.-Robert-Pfleger-Str. 26
D-96103 Hallstadt

Fax: 0049 (0) 951 96555 - 55

E-Mail: info@cleancraft.de

Internet: www.cleancraft.de

Indications regarding the operating instructions

Original instructions

Edition: 08.11.2021

Version: 1.06

Language: English

Author: SN/ES

Indications regarding the copyright

Copyright © 2021 Stürmer Maschinen GmbH, Hallstadt, Germany.

The contents of these operating instructions are the sole property of the company Stürmer.

Passing on as well as copying of this document, the use and distribution of its content are prohibited if not explicitly permitted. Contraventions are liable to compensation.

Subject to technical modifications and error.

Content

1 Introduction	3
1.1 Copyright	3
1.2 Customer service	3
1.3 Limitation of liability	3
2 Safety	3
2.1 Symbol explanation	3
2.2 Obligations of the operating company	4
2.3 Requirements to staff	5
2.4 Personal protective equipment	5
2.5 General safety regulations	5
2.6 Safety labels on the vacuum cleaner	6
3 Intended Use	7
3.1 Unintended use	7
3.2 Residual risks	7
4 Technical Data	7
4.1 Table	7
4.2 Type plate	8
5 Transport, Packaging, Storage	8
5.1 Transport	8
5.2 Packaging	8
5.3 Storage	9
6 Description	9
7 Assembly	10
7.1 Mounting the wheels	10
7.2 Installation of the hose and nozzle	10
8 Scope of Delivery	11
9 Accessories	11
10 Operation	11
10.1 Dry or wet vacuuming	13
10.2 Automatic START/STOP function	13
10.3 Empty dust/dirt from the tank	14
10.4 Replacing the filter	14
10.5 Seal control	15
11 Care, Maintenance and Service/Repair	15
11.1 Care by cleaning	15
11.2 Maintenance and service/repair	15
11.3 Controls and permissions	15
12 Disposal, recycling of used devices	15
12.1 Decommissioning	15
12.2 Waste disposal of electric equipment	15
12.3 Disposal of dust bags and filters	15
12.4 Disposal of lubricants	15
13 Troubleshooting, Possible Causes, Solutions	16
14 Spare Parts	17
14.1 Ordering spare parts	17
15 Spare Parts Drawings	18
15.1 Spare parts drawing wetCAT 120 RH	18
15.2 Spare parts drawing wetCAT 131 IRH	19
16 Electrical Circuit Diagram	20
17 EC Declaration of Conformity	21

1 Introduction

You have made a good choice by purchasing the CLEANCRAFT vacuum cleaner.

Read the operating manual thoroughly before commissioning the machine.

It gives you information about the proper commissioning, intended use and safe and efficient operation and maintenance of your vacuum cleaner.

The operating manual is part of the vacuum cleaner package. Always keep this operating manual in the location where your vacuum cleaner is being operated. All local accident prevention regulations and general safety instructions for the operating range of your vacuum cleaner must also be complied with.

1.1 Copyright

The contents of these instructions are copyright. They may be used in conjunction with the operation of the vacuum cleaner. Any application beyond those described is not permitted without the written approval of Stürmer Maschinen GmbH. For the protection of our products, we shall register trademark, patent and design rights, as this is possible in individual cases. We strongly oppose any infringement of our intellectual property.

1.2 Customer service

Please contact your dealer if you have questions concerning your vacuum cleaner or if you need technical advice. They will help you with specialist information and expert advice.

Germany:

Stürmer Maschinen GmbH
Dr.-Robert-Pfleger-Str. 26
D-96103 Hallstadt

Repair service:

Fax: 0049 (0) 951 96555-111
E-Mail: service@stuermer-maschinen.de
Internet: www.cleancraft.de

Spare part orders:

Fax: 0049 (0) 951 96555-119
E-Mail: ersatzteile@stuermer-maschinen.de

We are always interested in valuable experience and knowledge gained from using the application which then could be shared and be valuable to develop our products even further.

1.3 Limitation of liability

All information and notes in these operating instructions were summarised while taking applicable standards and rules, the state-of-the-art technology and our long-term knowledge and experiences into consideration.

In the following cases the manufacturer is not liable for damages:

- Non-observance of the operating instructions,
- Inappropriate use
- Use of untrained staff,
- Unauthorised modifications
- Technical changes,
- Use of not allowed spare parts.

The actual scope of delivery may deviate from the explanations and presentations described here in case of special models, when using additional ordering options or due to latest technical modifications.

The obligations agreed in the delivery contract, the general terms and conditions as well as the delivery conditions of the manufacturer and the legal regulations at the time of the conclusion of the contract are applicable.

2 Safety

This section provides an overview of all important safety packages for the protection of operating personnel as well as for safe and fault-free operation. Other task based safety notes are included in the paragraphs of the individual phases of life.

2.1 Symbol explanation

Safety instructions

The safety notes in these operating instructions are highlighted by symbols. The safety notes are introduced by signal words which express the concern of the risk.



DANGER!

This combination of symbol and signal words indicates an imminently dangerous situation which may lead to death or severe injury if not avoided.

**WARNING!**

This combination of symbol and signal words indicates a potentially dangerous situation which may lead to death or severe injury if not avoided.

**CAUTION!**

This combination of symbol and signal words indicates a potentially dangerous situation which may lead to slight or minor injury if not avoided.

**ATTENTION!**

This combination of symbol and signal words indicates a possibly dangerous situation which may lead to property and environmental damages if they are not avoided.

**NOTE!**

This combination of symbol and signal words indicates a potentially dangerous situation which may lead to material or environmental damage if not avoided.

Tips and recommendations**Tips and recommendations**

This symbol highlights useful tips and recommendations as well as information for an efficient and trouble-free operation.

It is necessary to observe the safety notes written in these operating instructions in order to reduce the risk of personal injuries and damages to property.

2.2 Obligations of the operating company

The operating company is the person who operates the vacuum cleaner for business or commercial reasons by herself, or leaves it to a third party for use or application, and who bears the legal product responsibility for the protection of the user, the staff or for third parties.

Obligations of the operating company:

If the vacuum cleaner is used for commercial purposes, the operating company of the vacuum cleaner must comply with the legal working safety regulations. Therefore, the safety notes in this operating manual, as well as the safety, accident prevention and environment protection regulations applying for the area of application of the vacuum cleaner must be met. The following applies in particular:

- During the entire lifetime the vacuum cleaner, the operating company must verify whether the operating manuals prepared by her correspond to the current status of the regulations, and must adapt these if necessary.
- The operating company must be informed about the applying industrial safety regulations and further analyse hazards resulting from the special working conditions at the place of use of the vacuum cleaner. She must implement these in form of operating manuals for the operation of the vacuum cleaner.
- The operating company must unambiguously regulate and determine the responsibilities for installation, operation, troubleshooting, maintenance and cleaning.
- The operating company must ensure that all persons who work with the vacuum cleaner, have read and understood this manual. Furthermore she must instruct the staff in regular intervals and inform them about the hazards.
- The operator must provide the necessary protective equipment to the staff and order the use of the necessary protective equipment in a binding way.

Furthermore the operating company is responsible to keep the vacuum cleaner always in a technically flawless state. Thus, the following applies:

- The operator must ensure that the maintenance intervals described in this manual are kept.
- The operator must have all safety devices checked regularly for their good working order and their integrity.

2.3 Requirements to staff

The different tasks described in this manual represent different requirements to the qualification of the persons entrusted with these tasks.



WARNING!

Danger in case of insufficient qualification of the staff!

Insufficiently qualified persons cannot estimate the risks while using the vacuum cleaner and expose themselves and others to the danger of severe or lethal injuries.

- Have all works only performed by qualified persons.
- Keep insufficiently qualified persons out of the working area.

Only persons reliable working procedures can be expected from, are allowed to perform all works. Persons the responsiveness of which is affected by e. g. drugs, alcohol or medication, are not allowed to work with the machine.

The qualifications of the personnel for the different tasks are mentioned below:

Operator:

The operator is instructed by the operating company about the assigned tasks and possible risks in case of improper behaviour. Any tasks which need to be performed beyond the operation in the standard mode must only be performed by the operator if it is indicated in these instructions and if the operating company expressly commissioned the operator.

Electrically qualified person:

Electrically qualified person is due to their professional training, knowledge and experience as well as knowledge of the relevant standards and regulations, in a position to carry out work on the electrical systems and to independently recognize and avoid possible dangers.

Qualified personnel:

Due to their professional training, knowledge and experience as well as their knowledge of relevant regulations the specialist staff is able to perform the assigned tasks and to recognise and avoid any possible dangers themselves.

Manufacturer:

Certain works may only be performed by specialist personnel of the manufacturer. Other personnel is not authorized to perform these works. Please contact our customer service for the execution of all arising work.

2.4 Personal protective equipment

The personal protective equipment serves to protect persons against impairments of safety and health while working. The staff member has to wear personal protective equipment while performing different tasks on and with the machine which are indicated in the individual paragraphs of these instructions.

The personal protective equipment is explained in the following paragraph:



Protective gloves

The protective gloves serve to protect the hands against sharp components as well as against friction, abrasions or deep injuries.



Safety boots

Safety boots protect the feet from being crushed, falling parts and slipping over on slippery ground.



Protective clothes

Protective clothes are made of a tightly fitted fabric without the protruding parts of low tear strength.



Eye protection

Protective goggles protect the eyes from flying parts and liquid splashes.

2.5 General safety regulations

Please note the following:

- Use the guards and secure them securely. Never work without protections and keep them functional.
- The wet/dry vacuum cleaner must not be modified in its design and should not be used for purposes other than those specified by the manufacturer.
- Never work under the influence of concentration-disturbing illnesses, fatigue, drugs, alcohol or medicines.
- Protect the cable from heat, oil and sharp edges.
- Immediately eliminate any faults that impair safety.
- Protect the wet/dry vacuum cleaner from moisture (danger of short circuit).
- Before each use, make sure that no parts of the vacuum cleaner are damaged. Damaged parts must be replaced immediately to avoid sources of danger.

- Never use the device with a damaged cable or plug. Damaged power cables must be replaced by the manufacturer or its service department.
- Do not overload the wet/dry vacuum cleaner! You work better and safer in the specified power range.
- Do not pull the cable to move or transport the device.
- Do not use the cable as a handle.
- Do not run the device over the cable.
- Do not place the cable near hot surfaces.
- This vacuum cleaner generates negative pressure and contains a rotating brush roller. Keep hair, loose clothing, fingers and all other parts of the body away from openings or moving parts.
- Do not push any objects against or into the openings and do not use the device with blocked openings.
- Keep openings free of dust, lint, hair and anything else that may reduce airflow.
- Do not use the unit to aspirate flammable or combustible liquids, such as gasoline or reactive dust particles, or in areas where these substances may be present. Never soak up any burning, smoking, or glowing objects.
- Do not use when the dust collector and filter have not been properly installed.
- If the device does not work properly, has fallen or been damaged, left outdoors or immersed in water, take it to a service centre or to the supplier.
- The vacuum cleaner is not intended for use as a water pump. The unit is designed to aspirate a mixture of air and water.
- Connect the device to a properly grounded power supply. The power outlet and extension cord must have a protective earth conductor. Only use plugs and extension cords with a suitable current carrying capacity.
- Provide adequate ventilation at the point of use.
- Do not use the device as a ladder or kick. It may overturn and be damaged.
- Do not leave the vacuum cleaner unattended on the mains supply. Switch off the vacuum cleaner using the switch and unplug the power cord from the power outlet when the device is not in use or to be serviced.
- Take special care when cleaning stairs.
- Set the appliance to minimum every 15 minutes (for 1 minute) to cool down the motor - failure to do so may result in motor failure.



ATTENTION!

The device is not suitable for areas protected against electrostatic discharges.



ATTENTION!

Don't ever point the suction opening towards delicate parts of the body – of people or animals - such as eyes, ears, mouth, etc.



ATTENTION!

Store the device under consideration of its weight, i.e. on a firm, level surface and only in a closed room without humidity.



ATTENTION!

If the device is equipped with an additional socket, the power indicated on the socket must not be exceeded. Failure to comply with this requirement may result in fire, personal injury or even death to the user.

Use only the brushes supplied with the appliance or those specified in the instructions. Using other brushes may compromise safety.



ATTENTION!

Never leave the running vacuum cleaner unattended. Always unplug the device from the electrical outlet when it is not in use and keep it out of the reach of children or irresponsible persons. Never allow children to play with the device.



ATTENTION!

Immediately switch off in case of leakage of liquid or foam. In the event of overturning, it is recommended that the unit be raised before switching it off.

2.6 Safety labels on the vacuum cleaner

The following safety labels and instructions are attached to the vacuum cleaner (Fig. 1) and must be observed.



Fig. 1: General safety instructions: 1 Warning of electrical voltage; Mandatory sign: 2 Pull mains plug.

If safety labels on the machine are damaged or missing, this can cause errors, personal injury and material damage.

The safety symbols attached to the machine must not be removed. Damaged safety symbols must be replaced immediately.

As soon as the signs are not clearly visible and comprehensible at first glance, the machine must be stopped until new signs have been attached.

3 Intended Use

The wet/dry vacuum cleaner is used exclusively for vacuuming dry, non-flammable dust and liquids. The vacuum cleaner is intended for use in communal facilities (hotels, schools, hospitals, factories, offices, workshops) and/or in households.

Possible applications: Floor cleaning, upholstery cleaning, dust extraction in combination with power tools.

The wet/dry vacuum cleaner must not be used in potentially explosive atmospheres.

Intended use also includes compliance with all information in these instructions. Stürmer Maschinen GmbH assumes no liability for constructive and technical modifications to vacuum cleaner. Claims of any kind for damage due to improper use are excluded.



ATTENTION!

Any modification of the device is prohibited. The modification may result in forfeiture of warranty, fire, personal injury or death to the user. The manufacturer accepts no liability for damage caused to objects or persons as a result of non-compliance with these instructions or misuse of the device.

3.1 Unintended use



WARNING!

Dangers in case of unintended use!

Unintended use of the vacuum cleaner can cause hazardous situations.

- Only operate the wet/dry vacuum cleaner within the performance limits stated in the technical data.
- Do not bypass or disarm safety equipment.
- Only use the vacuum cleaner in technically perfect condition.



ATTENTION!

This device is not suitable to suck up dangerous dust. Do not suction glowing, flammable, explosive or toxic substances. The maximum allowable working temperature is 40°C / 104°F.

- Do not soak up aggressive cleaning agents as they could damage the unit.
- Do not absorb materials that could damage the filter elements (e.g. glass splinters, metal, etc.).
- Do not absorb water from containers, washbasins, tubs, etc.

3.2 Residual risks

Even if all safety instructions are observed, and the machine is put to its intended use, there are still residual risks, which are listed below:

- Risk of injury of upper and lower limbs while equipment is operating.

4 Technical Data

4.1 Table

Model	wetCAT 120 RH	wetCAT 131 IRH
Length approx. [mm]	429	429
Width/depth approx. [mm]	368	368
Height approx. [mm]	645	658
Weight (net) approx. [kg]	9	9,5
Supply voltage [V]	220-240	220-240
Current type	AC	AC
Supply frequency [Hz]	50	50
Vacuum cleaner type	wet & dry	wet & dry
Air volume [l/min]	1800	1800
Tank volume [l]	20	30
Tank material	Plastic	Stainless steel
Hose diameter [mm]	35	35
Hose length [m]	1,5	1,5
Sound pressure level [dB (A)]	76	76
Cable length [m]	8,5	8,5
Amount of motors	1	1
Motor cooling	Bypass	Bypass
Negative pressure [mbar]	160	160
Input power [kW]	1,2	1,2

Model	wetCAT 120 RH	wetCAT 131 IRH
Efficiency [%]	19,5	19,5
Filter surface [cm²]	2889	2889
Connected load max. appliance socket [kW]	2,4	2,4
Motor speed [1/min]	28000 - 32000	
Total current consumption	5 A	5 A
Protection class of drive motor	IP 24	IP 24

Features:

- Antistatic
- Suction pipe holder
- Cable holder
- Hose and nozzle set
- Integrated socket for power tools
- Motor protection
- Cartridge filters

4.2 Type plate


Nass- / Trockensauger			
Wet/dry vacuum cleaner			
Type	wetCAT 120 RH	Serial no.	
Item no.	7002110	Year of manufacture	
Weight	9 kg	Power supply	230 V
Air volume flow	1800 l/min	Input power	1,2 kW
Max. socket power	2,4 kW	Sound pressure LWA	76 dB
 Stürmer Maschinen GmbH Dr.-Robert-Pfleger-Str. 26 96103 Hallstadt, Germany			
www.cleancraft.de			

Fig. 2: Type plate wetCAT 120 RH

5 Transport, Packaging, Storage

5.1 Transport



CAUTION!

Injuries caused by parts falling over or off a forklift, pallet truck or transport vehicle.
Only use means of transport that can carry the total weight and are suitable for it.

Improper transport of individual devices, unsecured devices stacked on top of each other or next to each other in packed or already unpacked condition is accident-

prone and can cause damage or malfunctions for which we do not grant any liability or guarantee.

Transport the scope of delivery secured against shifting or tilting with a sufficiently dimensioned industrial truck to the installation site.

General risks during internal transport



CAUTION: DANGER OF TIPPING!

The device may be lifted unsecured by a maximum of 2cm.

Employees must be outside the danger zone, the reach of loads. Warn employees and, if necessary, advise employees of the hazard.

Devices may only be transported by authorized and qualified persons. Act responsibly during transport and always consider the consequences. Refrain from daring and risky actions.

Gradients and descents (e.g. driveways, ramps and the like) are particularly dangerous. If such passages are unavoidable, special caution is required.

Before starting the transport check the transport route for possible danger points, unevenness and disturbances as well as for sufficient strength and load capacity.

Danger points, unevenness and disturbance points must be inspected before transport. The removal of danger spots, disturbances and unevenness at the time of transport by other employees leads to considerable dangers.

Careful planning of internal transport is therefore essential.

5.2 Packaging

All packaging materials and packaging aids used in the wet/dry vacuum cleaner are recyclable and must always be recycled.



ATTENTION!

Keep the packaging material out of the reach of children. There is a danger of suffocation!

The delivery packaging is made of cardboard, so please dispose carefully by having it chopped up and given to the recycling collection. The film is made of polyethylene (PE) and the cushioned parts of polystyrene (PS). Deliver these substances to a collection point for recyclable materials or to the waste disposal company which looks after your region.

5.3 Storage

Store the special vacuum cleaner in a dry, clean and frost-free environment. Store the device indoors.

The tubes can be stowed in clip hooks A (Fig.3) on the side of the unit, e.g. when the unit is moved from one location to another or - between two operations.



Fig. 3: Storage of the suction pipes

The nozzles can be stored in the accessory holders on the attachment at the rear (Fig.4).



Fig. 4: Nozzle storage

The cable (A) can be hooked in wrapped around the hooks (Fig.5).



Fig. 5: Hooks for cable hanging

6 Description

Description of wetCAT 120 RH and wetCAT 131 IRH

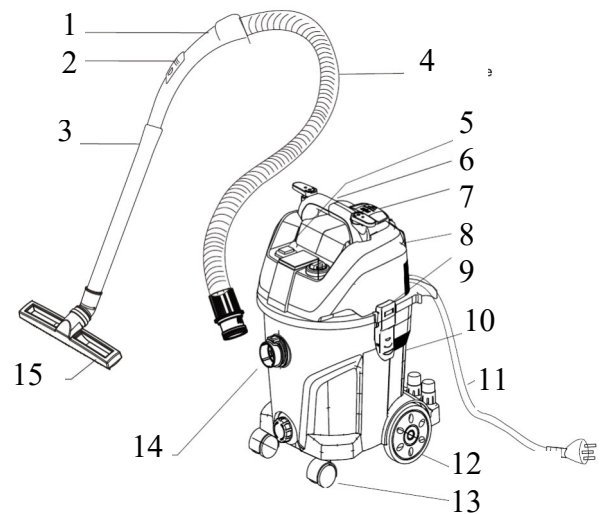


Fig. 6: Description wetCAT - Series

1. Handle
2. Sliding block
3. Two-piece aluminium suction pipe
4. Hose
5. Switch
6. Carrying handle
7. Push button
8. Upper cover housing (support)
9. Locking block
10. Dust container:
 - model wetCAT 131 IRH: stainless steel tank
 - model wetCAT 120 RH: plastic tank
11. Power cable with plug
12. Big wheel
13. Universal wheel
14. Suction nozzle
15. Floor brush



Floor brush



Carpet brush



Crevice nozzle for corners and cracks



Bristle brush

Fig. 7: Description of the brushes

7 Assembly

7.1 Mounting the wheels

Step 1: Open the carton, get out wheels and accessories.



Fig. 8: Assembly the wetCAT 120 RH

Step 2: Assemble the wheels.

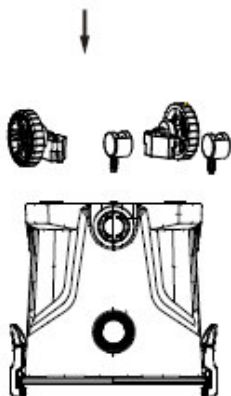


Fig. 9: Wheel mounting of wetCAT 120 RH and wetCAT 131 IRH

7.2 Installation of the hose and nozzle

Step 1: Connect the hose by connecting it via the coupling. The suction function is now available.

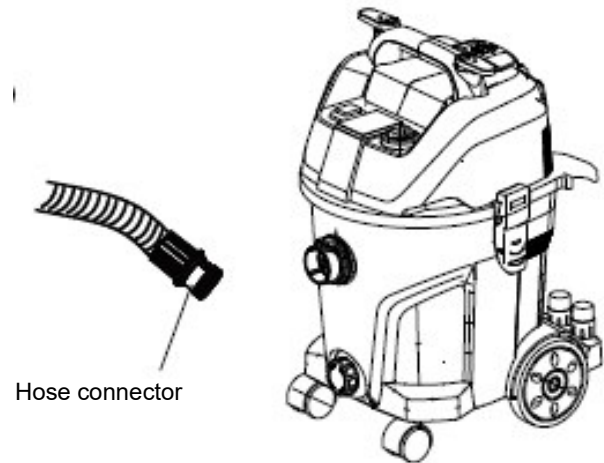


Fig. 10: Assembly the wetCAT 120 RH and wetCAT 131 IRH

Step 2: Insert the handle into the tube with a twisting force.

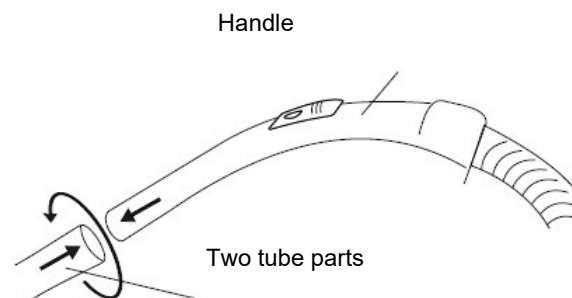


Fig. 11: Connecting the pipe to the handle

Step 3: Insert the end of the handle and the tube into each other by a twist.

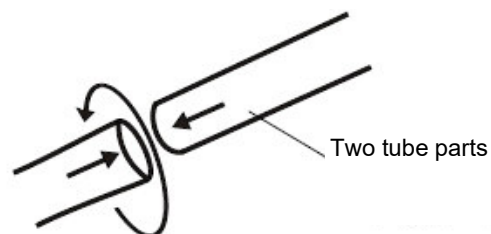


Fig. 12: Joining the pipe parts together

Step 4: Put the floor brush on the suction tube by turning the floor brush on the tube.

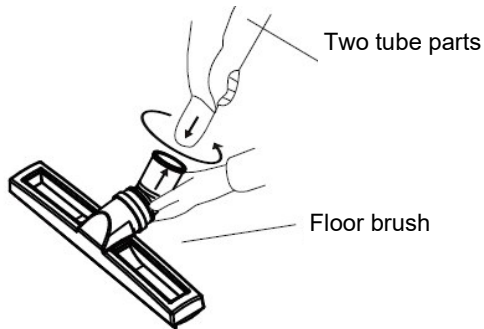


Fig. 13: Mounting the floor brush

Dual storage:

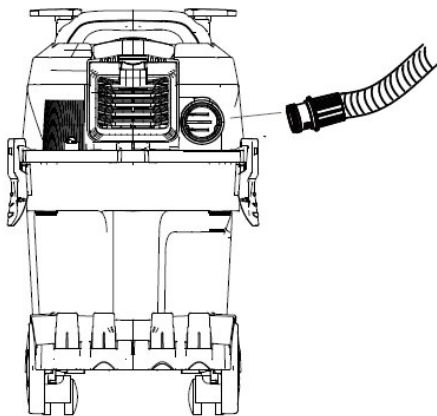


Fig. 14: Second dirt storage

8 Scope of Delivery

- Hose 2.0 m with connection and handle
- Flat nozzle
- Round nozzle with brush
- Floor nozzle with hinged brush
- Floor nozzle wet/dry
- Suction pipe Ø 35 mm / 3 x 0.33 m, aluminium
- HEPA filter
- Universal adapter
- Filter bag



Fig. 15: Scope of delivery

9 Optional Accessories

- Hose 2.0 m with connection and handle
Item number: 7013520
- Flat nozzle
Item number: 7013521
- Round nozzle with brush
Item number: 7013522
- Floor nozzle with hinged brush
Item number: 7013523
- Floor nozzle wet/dry
Item number: 7013524
- Suction pipe Ø 35 mm / 3 x 0.33 m, aluminium
Item number: 7013525
- Exhaust air filter HEPA E10
Item number: 7013526
- Filter bag
Item number wetCAT 120 RH: 7013530
Item number wetCAT 131 IRH: 7013531
- 5m Suction hose
Item number: 7013527
- Universal adapter
Item number: 7013528

10 Operation



ATTENTION!

- The wet/dry vacuum cleaner must not be used by children under the age of 8 or by persons with limited physical, sensory or mental abilities or experience unless they have been instructed in the safe use of the device and are aware of the potential hazards.
- Do not allow children to play with the vacuum cleaner.
- Cleaning and user maintenance must not be carried out by children under the age of 8 without supervision.
- Do not use the vacuum cleaner for more than 4 hours at a time (including rest periods) on any working day.

Never use the device to clean hazardous dusts such as:

- Ash dust, flour dust, wood dust
- sugar dust, wheat dust, potato dust
- Aluminium dust, zinc dust
- Magnesium dust, sulphur dust

**DANGER!****Danger of death from electric shock!**

There is a risk of fatal injury in the event of contact with live components. Switched-on electrical components can make uncontrolled movements and lead to serious injuries.

- Disconnect the mains plug from the vacuum cleaner before making any adjustments.
- Do not use the vacuum cleaner if the plug or cable is damaged.
- To disconnect the plug, pull the plug itself, not the cable.
- Do not use the plug or cable with wet hands.
- Do not handle the cleaning device with wet hands or without shoes.

**ATTENTION!**

The wet/dry vacuum cleaner must be mounted correctly before use. It must also be checked that the filter element is correctly mounted and efficient.

The vacuum cleaner should only be operated, mounted, repaired and transported on a stable, safe and unsupported surface.

Make sure that the mains plug of the device matches the socket.

The vacuum cleaner is designed for indoor use only. Never use the device outdoors!

**ATTENTION!**

When emptying the container of fine dust of any kind wear a protective mask!

**ATTENTION!**

The vacuum cleaner may only be used as follows:

- Never use without a filter.
- Switch off all switches before disconnecting the appliance from the mains.
- Empty the container after each use to avoid self-ignition.
- Do not leave the cable on the ground after finishing work. Danger of tripping!
- Other operating modes are strictly forbidden!

**ATTENTION!**

Always unplug the appliance from the wall outlet before handling the appliance when it is switched off. Switch off the appliance and disconnect it from the power supply in the following situations:

- Before cleaning and servicing the machine.
- Before replacing parts.
- When the equipment is finished operating.
- If foam develops or liquid escapes.

Always check the power cord for damage such as cracks or signs of aging. Replace the cable before using it again.

Replacement of a defective power cable must be performed by technical service or qualified personnel.

When using an extension cord, make sure it has the same cable dimension as the power cord of the apparatus and avoid contact of the cables with liquids or conductive surfaces.

**WARNING!**

Never suction the following materials:

- Explosive or flammable gases, liquids or dust particles (reactive dust particles).
- Reactive metal dust particles (such as aluminium, magnesium, zinc) together with highly alkaline or acid cleaning agents, undiluted strong acids and alkalis or organic solvents such as petrol, paint thinners, acetone, heating oil and similar products.
- No toxic, carcinogenic, flammable or other hazardous materials such as asbestos, arsenic, barium, beryllium, lead, pesticides.
- Absorb other hazardous materials.

**WARNING!**

Before putting the device into operation, make sure that the voltage indicated on the type plate corresponds to the mains voltage.

10.1 Dry or wet vacuuming

Start

Step 1: Unwind the cable of the wet/dry vacuum cleaner and insert the power plug into a power outlet.

Step 2: Set the On/Off button (A, Fig. 16) to level I to start the wet/dry vacuum. The power outlet on the machine is switched off at this level!

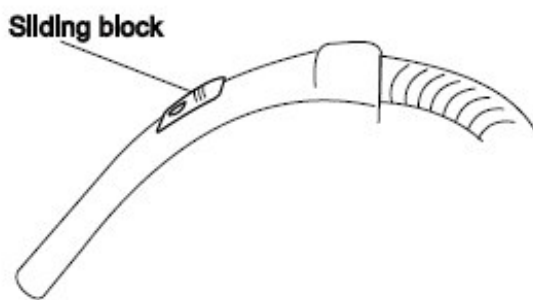
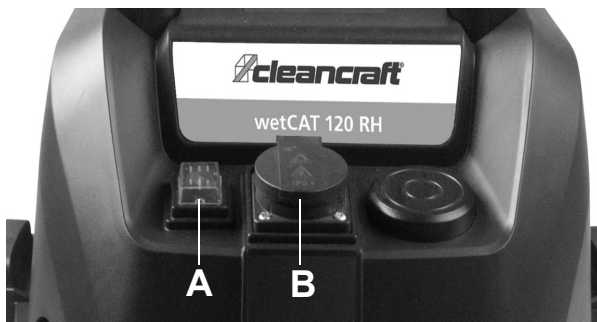


Fig. 16: Operating- and setting options

Step 3: Use the slider attached to the handle to adjust the airflow.

Step 4: To use the power socket (B, Fig.16) located on the device as a power source for power tools, switch A must be set to stage II. Please note point 8.2) Automatic START/STOP function!

Stop

Step 5: Turn off the device by setting the switch to 0. Then remove the power plug from the socket.



NOTE!

When disconnecting, always hold the plug and do not pull the cable.

10.2 Automatic START/STOP function

The wet/dry vacuum cleaner is equipped with an additional socket (Fig.16) which can be used to connect a power tool.

Step 1: Connect the power tool to socket **B** (Fig.16).

Step 2: Use the ON/OFF switch to start the device on level II (**A**).

Step 3: Start the power tool.

The vacuum cleaner starts (automatic start-up) when the power tool is switched on and stops with a certain delay (time to empty the hose) when the power tool is switched off.

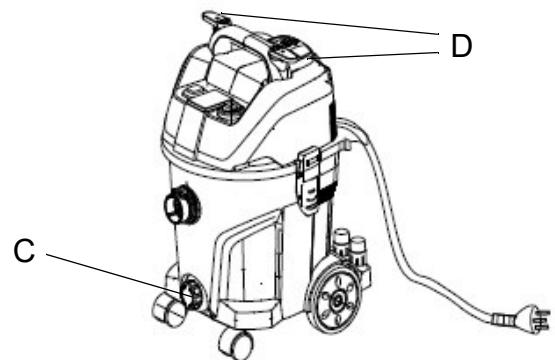


Fig. 17: Additional socket and automatic START/STOP function

Additional functions (Fig.17):

- Outlet valve (Pos. **C**) for easy emptying of liquids.
- Adjustable holding clamps (Pos. **D**) for clean storage of the cable.



FIRE AND EXPLOSION HAZARD!

The vacuum cleaner's equipment includes parts such as switches, motors and the like that tend to generate arcs or sparks that can cause an explosion.

- Do not absorb flammable, combustible or hot materials.
- Do not use the device near explosive liquids or vapors, as electric devices may generate electric arcs or sparks that could cause a fire or explosion.
- Do not use at petrol stations or where petrol is stored or distributed.



WARNING!

Danger in case of misuse!

Improper use of the vacuum cleaner may result in hazardous situations.

- Read the safety warnings and instructions regarding the types of wet material that should not be absorbed by this equipment.



NOTE!

The device has a thermal protection which protects the motor from high temperatures. This can occur during intensive use.

If the motor temperature causes the device to turn off during operation, set the switch to OFF and allow the motor to cool for 5 minutes. Then switch on again and resume operation.

10.3 Empty dust/dirt from the tank

Step 1: To empty the dust/dirt from the tank, open the locking mechanism and remove the upper part of the housing (Fig. 18).

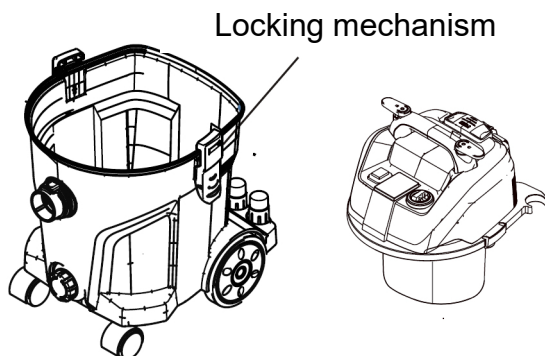


Fig. 18: Empty the tank

Step 2: Empty the contents by tilting the lower part of the housing (Fig. 19). If a dust bag is used, remove it and insert a new one.

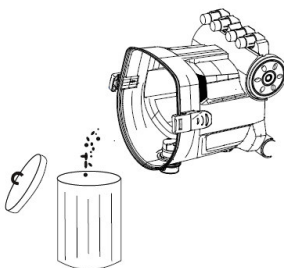


Fig. 19: Empty the filter

Step 3: Replace the housing cover on the lower part and close it with the locking mechanism.

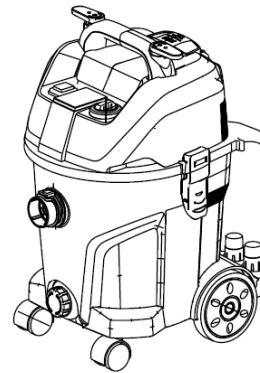


Fig. 20: Empty dust/dirt from the tank

10.4 Replacing the filter

Manually filter cleaning

The device is equipped with a filter.

If very fine dust is sucked up, the filter may clog, resulting in reduced suction power. The filter must be cleaned to restore the suction power. The filter can be cleaned manually as follows (Fig.21):

Step 1: Open the locking mechanism of the attachment on both sides.

Step 2: Lift the attachment from the body and turn it over.

Step 3: Loosen the bayonet catch of the filter cartridge by turning it clockwise.

Step 4: Lift off the filter cartridge and clean it if possible. Otherwise, replace it with a new filter cartridge.

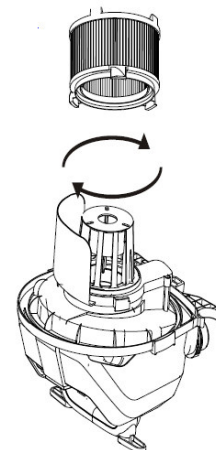


Fig. 21: Replacement of the filter cartridge

Step 5: Reassemble the components in reverse sequence.

10.5 Seal control

Over time, it is possible that the seals may lose some of their functionality. This leads to a reduction in suction power. We recommend checking the functionality of the lock hooks, flexible suction hoses and seals at regular intervals.

Also check that the edges of the container are not damaged.

11 Care, Maintenance and Service/Repair



DANGER!

Risk of death due to electric shock!

Contact with live components may result in fatal injury. Switched-on electrical components can make uncontrolled movements and lead to serious injuries.

- Disconnect the mains plug before starting cleaning and maintenance work.

11.1 Care by cleaning

The wet/dry vacuum cleaner should always be kept in a clean condition.



Use protective gloves!

Wear suitable protective gloves for cleaning in order to protect against injuries caused by chips.

The ventilation slots of the motor must be kept clean to ensure adequate cooling.



ATTENTION!

Clean the wet/dry vacuum cleaner after use in all parts; empty the containers, tap the filters and wipe the apparatus with a cloth.

Cleaning must not be performed by children 8 years of age and younger if they are not supervised by adults.

Maintenance and repairs must always be carried out by qualified personnel; any damaged parts must only be replaced with original spare parts.

11.2 Maintenance and service/repair

If the wet/dry vacuum cleaner does not function properly, contact a specialist dealer or our customer service. Contact details can be found in chapter 1.2 Customer Service.

11.3 Controls and permissions

The electrical checks must be carried out in accordance with the provisions of the safety directive EN 62638. The inspections must be carried out at regular intervals and after repairs or modifications. The vacuum cleaner is approved according to IEC/EN 60335-2-69.

12 Disposal, recycling of used devices

Please take care in your own interest and in the interest of the environment that all component parts of the machine are only disposed of in the intended and permitted way.

12.1 Decommissioning

Immediately decommission disused machines in order to avoid later misuse and endangering of the environment or personal safety.

- Eliminate all environmentally hazardous operating materials from the used device.
- If required, disassemble the machine into easy to-handle and usable components and parts
- Dispose of machine components and operating materials by the disposal channels provided.

12.2 Waste disposal of electric equipment

Please note that electrical devices contain a variety of recyclable materials as well as environmentally harmful components.

You contribute to that these components are disposed of separately and properly. In case of doubt, please contact your municipal waste disposal.

As necessary, a specialized waste disposal company can help be used for the treatment.

12.3 Disposal of dust bags and filters

The dust bags and filters are made of eco-friendly materials. The filters can be disposed of with normal household waste. This also applies to the dust bag as long as it does not contain any dirt prohibited in household waste.

12.4 Disposal of lubricants

Please pay attention to an environmentally friendly disposal of the used coolants and lubricants. Observe the disposal instructions of your municipal disposal companies. The disposal instructions for the lubricants used are provided by the lubricant manufacturer. If necessary, ask for the product-specific data sheets.

13 Troubleshooting, Possible Causes and Solutions



ATTENTION

If one of the following errors occurs, immediately stop working with the special vacuum cleaner. Before you begin troubleshooting, turn off the special vacuum and unplug the power cord. Otherwise it could lead to serious injuries. All repairs or replacement work may only be carried out by qualified and trained specialist personnel.



NOTE!

If you can not solve the problem with your vacuum cleaner yourself, then please contact your nearest Cleancraft dealer. Please write down the following information from the vacuum cleaner or the operating instructions in advance to help you with your problem in the best possible way.

- Model name of the device
- Serial number of the device
- Construction year
- Exact error description

Troubleshooting	Possible Cause	Solution
Device does not work.	<ol style="list-style-type: none"> 1. Power plug is not plugged in. 2. Supply lines is defective. 3. Switch is defective 4. Motor is defective. 5. Fuse's blown. 6. plug is defective. 	<ol style="list-style-type: none"> 1. Plug in mains plug. 2. Call the service technician. 3. Call the service technician. 4. Call the service technician. 5. Call the service technician. 6. Call the service technician.
The motor does not function in automatic mode.	<ol style="list-style-type: none"> 1. The power tool is defective or not used in accordance with the regulations. 	<ol style="list-style-type: none"> 1. Check that the power tool is functioning.
The motor switches off.	<ol style="list-style-type: none"> 1. Motor temperature too high, thermal protection switches the device off. 	<ol style="list-style-type: none"> 1. Set the switch to OFF. Wait 10 minutes, allow motor to cool down.
The suction power is decreased.	<ol style="list-style-type: none"> 1. Tank is full. 2. The hand tube, hose or nozzle is blocked. 3. One component of the wet/dry vacuum cleaner is damaged. 4. Filter is blocked. 5. Filter is not inserted correctly. 6. The connection between the hose and the device has become loose. 	<ol style="list-style-type: none"> 1. The tank must be emptied. 2. Clean the hand tube, hose or nozzles. 3. Replace damaged Wet/Dry Vacuum Cleaner component. 4. Clean the filter using the filter cleaning system. 5. Check the filter and insert it correctly. 6. Tighten the connection between the hose and the device.
Electrostatic discharges.	<ol style="list-style-type: none"> 1. The environment is too dry. 	<ol style="list-style-type: none"> 1. Increase air humidity in the work area 2. Please observe that a low air humidity does not affect the operation of the device.

14 Spare Parts

14.1 Ordering spare parts



DANGER!

Danger of injury by the use of wrong spare parts.

Dangers may result for the user and damages as well as malfunctions may be caused by using wrong or damaged spare parts.

- Only use original spare parts of the manufacturer or spare parts admitted by the manufacturer.
- Always contact the manufacturer in case of uncertainties.



Tips and recommendations

The manufacturer's warranty will become null and void if non-permissible spare parts are used.

The spare parts may be purchased with the authorised dealer or directly with the manufacturer.

Indicate the following basic information for requests or orders of spare parts:

- Type of device
- Item No.
- Position No.
- Year of construction:
- Quantity
- Required mode of dispatch (mail, freight, sea, air, express)
- Address of dispatch

Spare part orders which do not include the above indications may not be taken into consideration. If the indications regarding the mode of dispatch are missing, the product is dispatched at the discretion of the supplier.

You will find information regarding the device type, item No. and year of manufacture on the type plate fixed to the vacuum cleaner.

Example

The seal of the wet/dry vacuum cleaner wetCAT 120 RH must be ordered. The seal is identified in the spare parts drawing with position number 40.

When ordering spare parts, send a copy of the spare parts drawing with the marked component (seal) and marked position number (40) to the authorised dealer or to the spare parts department and provide the following information:

- | | |
|------------------------------|---|
| - Type of device: | Wet/Dry Vacuum Cleaner
wetCAT 120 RH |
| - Item number: | 7002110 |
| - Spare parts drawing number | 1 |
| - Position number: | 40 |

The Item number of your device::

- | | |
|-----------------|----------------|
| wetCAT 120 RH: | 7002110 |
| wetCAT 131 IRH: | 7002115 |

In case of service, the following drawings shall help to identify the necessary spare parts.

15 Spare Parts Drawings

15.1 Spare parts drawing wetCAT 120 RH

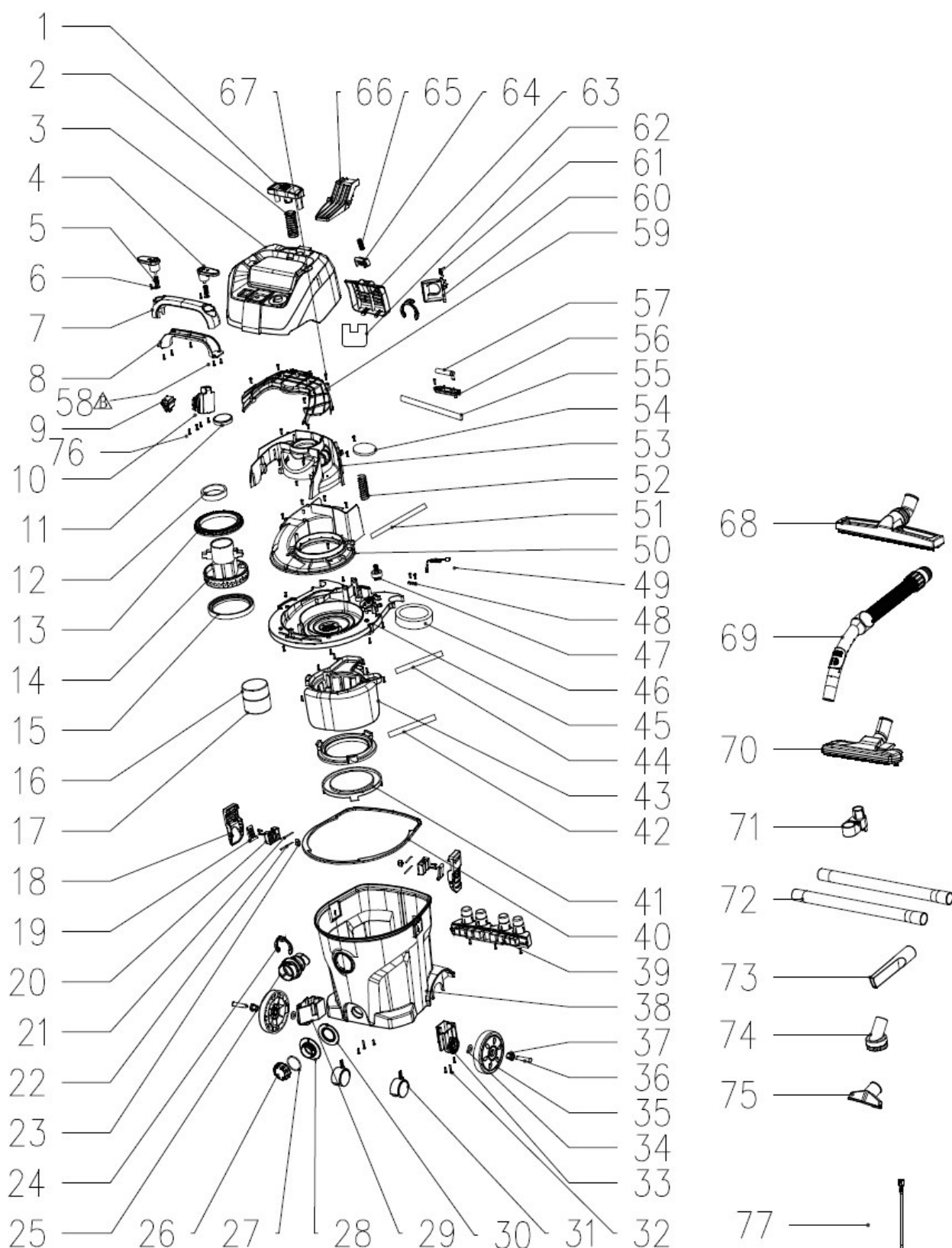


Fig. 22: Spare parts drawings of the vacuum cleaner wetCAT 120 RH

15.2 Spare parts drawing wetCAT 131 IRH

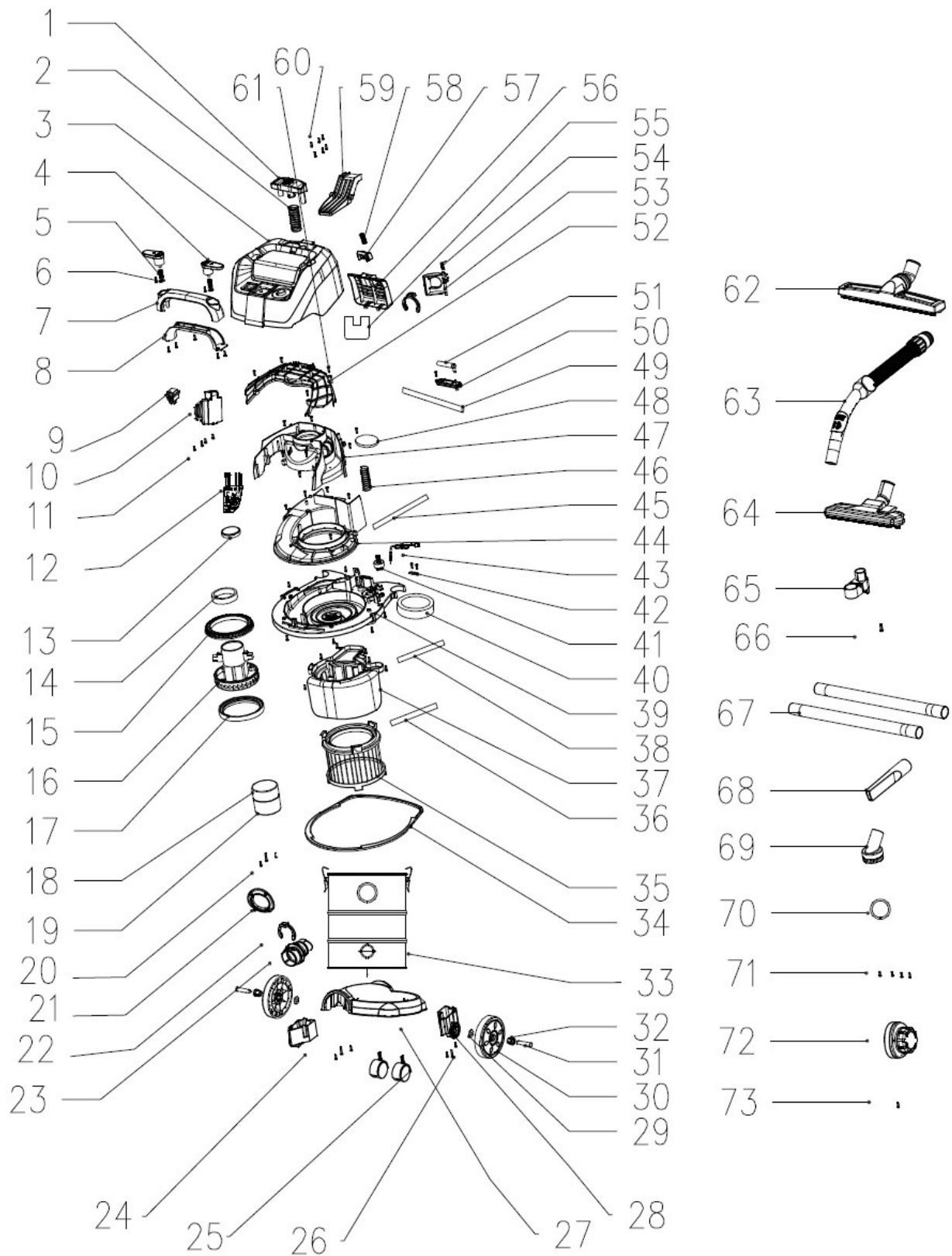


Fig. 23: Spare parts drawings of the vacuum cleaner wetCAT 131 IRH

16 Electrical circuit diagram

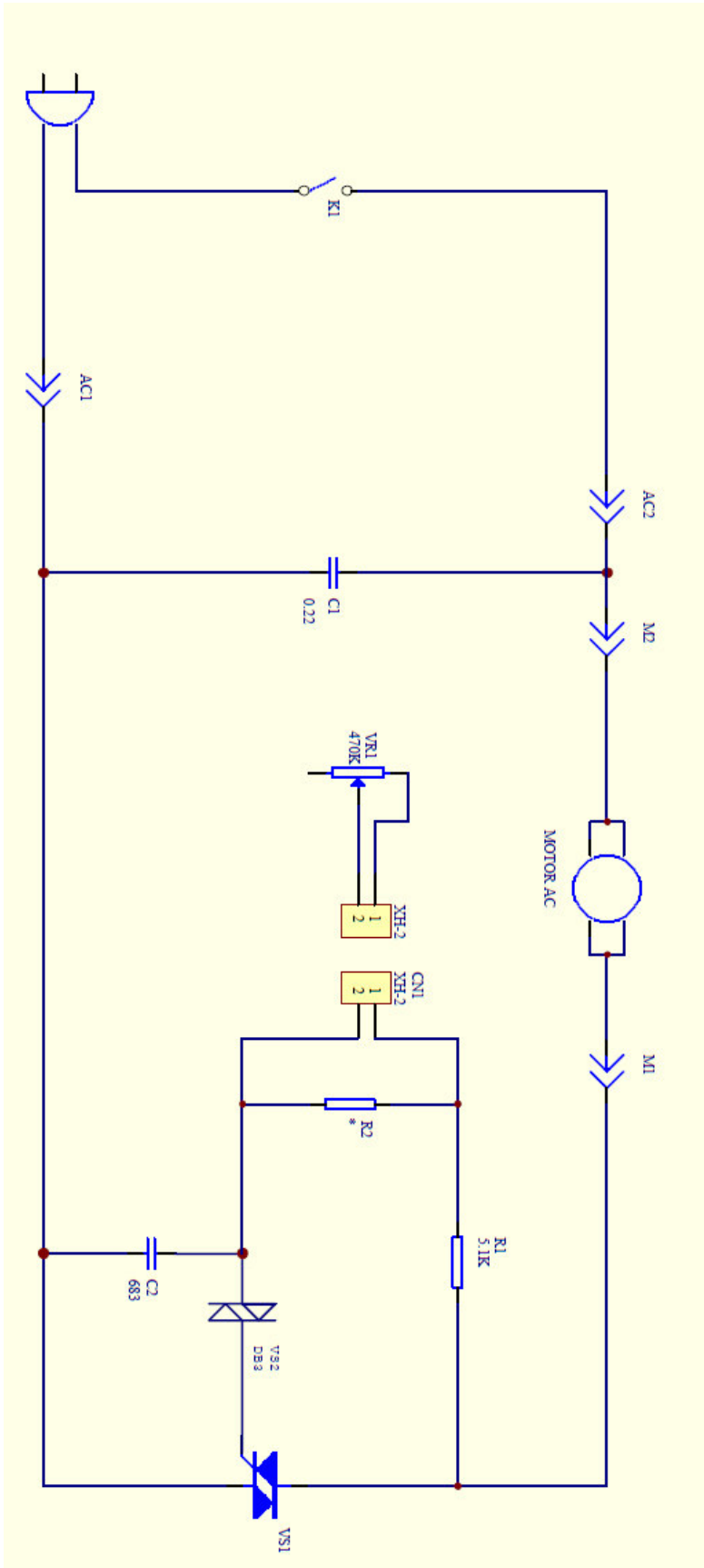


Fig. 24: Electrical circuit diagram wetCAT - Series

17 EC Declaration of Conformity

According to Machinery Directive 2006/42/EC, Annex II 1.A

Manufacturer / distributor: Stürmer Maschinen GmbH
Dr.-Robert-Pfleger-Str. 26
D-96103 Hallstadt

hereby declares that the following product

Product group: Cleancraft® Suction devices

Machine type: Wet/Dry Vacuum Cleaner

Designation of the machine*:

☐ wetCAT 120 RH

☐ wetCAT 131 IRH

Item number:

7002110

7002115

Serial number*: _____

Year of manufacture*:

20 _____

*Fill in these fields according to the information on the type plate

complies with all relevant provisions of the above mentioned directive as well as the other applied directives (below) - including their applicable modifications at the time of the declaration.

Relevant EU Directives: 2011/65/EC RoHS Directive
2015/863/EC Amendment of Annex II of Directive 2011/65/EU
2014/30/EC EMC Directive

Following standards where applied:

DIN EN 60335-1/A13:2018-07	Household and similar electrical appliances - Safety - Part 1: General requirements
DIN EN 60335-2-2:2014-11	Household and similar electrical appliances - Safety - Part 2-2: Particular requirements for vacuum cleaners and water-suction cleaning appliances (IEC 60335-2-2:2009 + A1:2012)
DIN EN 62233:2008-11	Measurement methods for electromagnetic fields of household appliances and similar apparatus with regard to human exposure (IEC 62233:2005, modified)
DIN EN 55014-1:2018-08	Electromagnetic compatibility - Requirements for household appliances, electric tools and similar apparatus - Part 1: Emission (CISPR 14-1:2016 + COR1:2016)
DIN EN 55014-2:2016-01	Electromagnetic compatibility - Requirements for household appliances, electric tools and similar apparatus - Part 2: Immunity - Product family standard (CISPR 14-2:2015)
DIN EN 61000-3-2:2015-03	Electromagnetic compatibility (EMC) - Part 3-2: Limits - Limits for harmonic current emissions (equipment input current ≤ 16 A per phase) (IEC 61000-3-2:2014)
DIN EN 61000-3-3:2014-03	Electromagnetic compatibility (EMC) - Part 3-3: Limits - Limitation of voltage changes, voltage fluctuations and flicker in public low-voltage supply systems, for equipment with rated current ≤ 16 A per phase and not subject to conditional connection (IEC 61000-3-3:2013)

Responsible for documentation: Kilian Stürmer, Stürmer Maschinen GmbH,
Dr.-Robert-Pfleger-Str. 26, D-96103 Hallstadt

Hallstadt, 26.07.2019



Kilian Stürmer
Managing Director



