

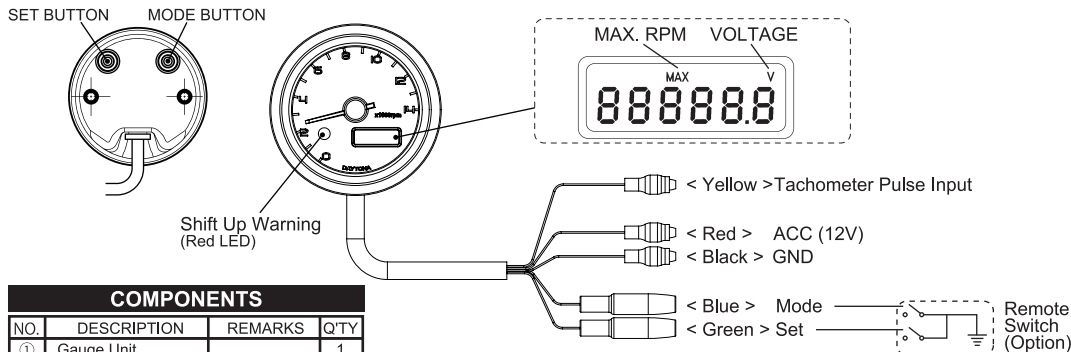
CAUTION

- Read all instructions before use.
- This product is NOT water-proof, but water-resistant. Internal condensation may be found due to a sudden and rapid change of ambient temperature.
- Disconnect the ground wire from the negative post of vehicle's battery before installation.
- Designed for a 12V system. VELONA gauges do NOT work with a 6 volt system or a battery-less system.
- Use VELONA gauges for the intended purpose of use.
- DO NOT disassemble VELONA gauges. It may be damaged and water may come in.
- Do NOT leave VELONA gauges under the sunlight when not used.
- Avoid contact with gasoline, brake fluid or other chemicals. It may be damaged.
- DO NOT hit, drop or give a shock on VELONA gauges. It may be damaged due to a precision part.
- Rubber mounting is recommended for vehicles with much vibration.
- After installation, check to see if all the parts are correctly installed, and to see if all the screws are properly tightened.
- Periodical inspection of the installed parts is required every 500km(300mile). If anything unusual may be found while driving, pull over at a safe place to check.

PRODUCT FEATURES

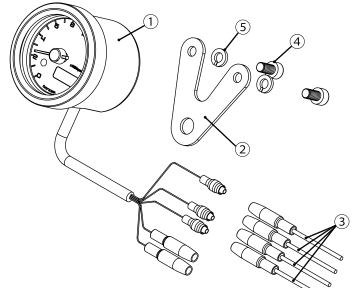
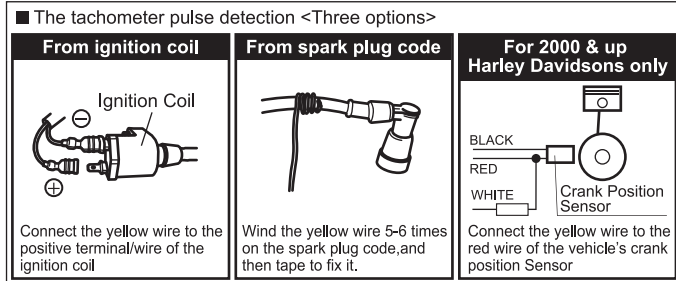
- Stepping motor-driven tachometer
- Maximum RPM memory and recall
- Voltmeter, Range : 0-18.0V
- Display LED color selectable from 3 color (White / Blue / Orange)
- Shift up warning with Red LED

INSTALLATION & COMPONENTS

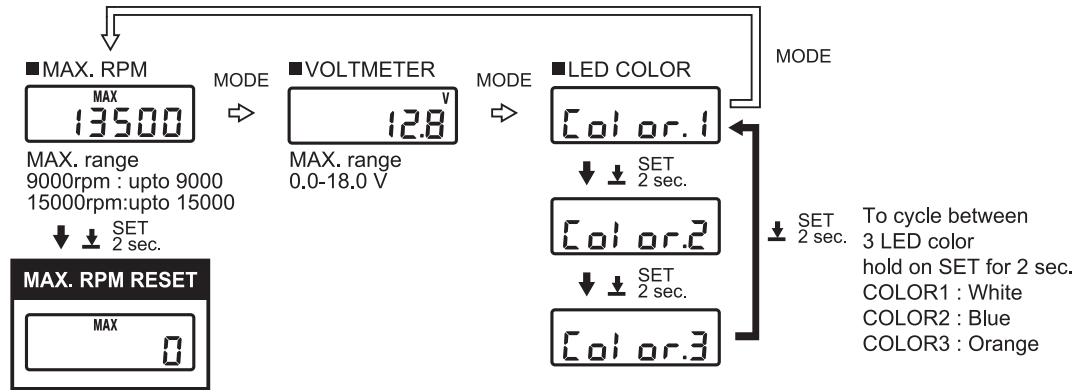


COMPONENTS			
NO.	DESCRIPTION	REMARKS	Q'TY
①	Gauge Unit		1
②	V-Bracket		1
③	Extention Wire Set		1
④	Cap screw	M5 x 10	2
⑤	Spring washer	M5	2

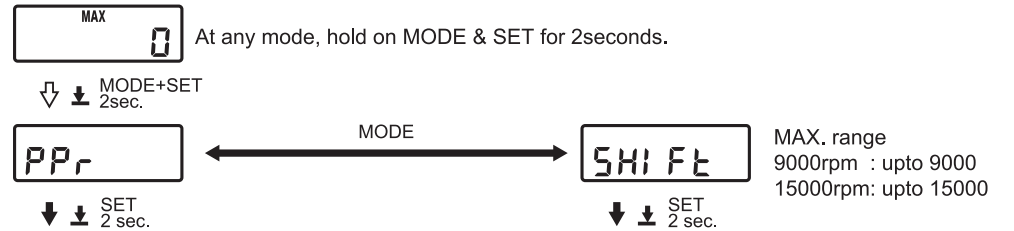
The Red wire is to be connected to the vehicle's wire that gives current when the main switch is turned on



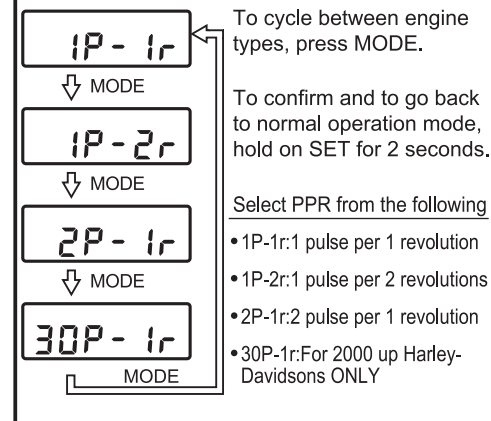
NORMAL OPERATION MODE



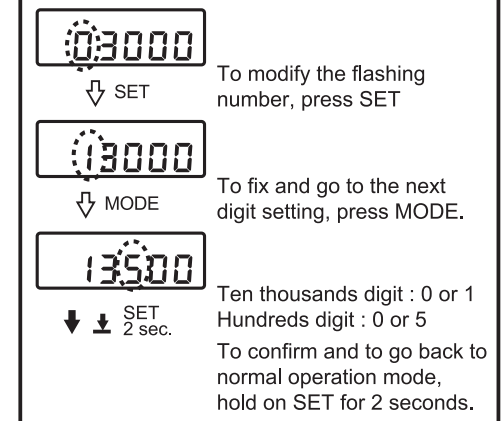
SETUP MODE



PPR (Pulse Per Rotation) SETUP

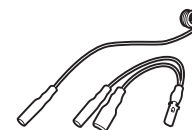


SHIFT UP WARNING SETUP



OPTIONAL PARTS

RPM Induction Wire Set, <PART#87170>



REMOTE SWITCH <PART#87047(black)> <PART#87082(chrome)>

