

# operating instructions

## water hose reel

- WSAR 20-2
- WSAR 30-2



hose reel WSAR 20-2



hose reel WSAR 30-2






## Table of contents

1 Safety.....	4 1.1 Safety instructions
(warnings) .....	4 1.2 Intended
use.....	5 1.3 Reasonably foreseeable
misuse .....	5 1.4 Residual
risks .....	5 1.5 General safety
instructions .....	6 1.6 Safety
markings .....	6
2 Technical data .....	7 2.1 Type
plate.....	7 3 Device
description .....	8 3.1
Dimensions .....	9 4 Transport and
assembly .....	10 4.1
Delivery.....	10 4.2
Packaging.....	10 4.3
Storage.....	10 4.4
Assembly .....	10
5 Operation.....	13 5.1 Adjusting the stop
ball.....	13 6 Care and
maintenance.....	14 7 Spare
parts.....	15 7.1 Ordering spare
parts.....	15 7.2 Spare parts drawing WSAR
20-2.....	16 7.3 Spare parts drawing WSAR
30-2.....	17 8 EU declaration of
conformity.....	18 9
Appendix.....	19 9.1
Copyright.....	19 9.2
Storage.....	19 9.3 Disposal information / recycling
options.....	19 9.4 Disposal via municipal collection
points .....	20 10 Product
monitoring .....	21

## foreword

Dear Customer,

Thank you for purchasing the  **cleancraft** hose reel.

 **cleancraft** Hose reels offer the highest level of quality, technically optimal solutions and convince with an outstanding price-performance ratio. Constant further developments and Product innovations ensure the latest state of technology and safety at all times.

Before commissioning, please read this manual thoroughly and familiarize yourself with the Hose reel. Also make sure that all persons operating the hose reel always read and understand the operating instructions beforehand. Keep this operating manual carefully in the area of the hose reel.

### information

The operating instructions contain information on safe and proper installation, operation and Maintenance of the hose reel. Constant observance of all instructions contained in this manual ensures the safety of people and the hose reel.

The manual specifies the intended purpose of the hose reel and contains all necessary Information about its economic operation and its long service life.

The Maintenance section describes all maintenance work and functional tests that the user must be carried out regularly.


The illustrations and information contained in this manual may differ from the current construction status of your hose reel. As a manufacturer, we are constantly striving to improve and renewal of the products, therefore changes can be made without be announced in advance. The illustrations of the hose reel may differ in some details from the Illustrations in this manual may differ, but this does not affect the usability of the hose reel.

Therefore, no claims can be derived from the information and descriptions. Changes and We reserve the right to make errors!

Your suggestions regarding this manual are an important contribution to optimizing our work, that we offer our customers. If you have any questions or suggestions for improvement, please contact our service.

If you have any questions after reading this manual or if you cannot solve a problem not solved with the help of this manual, please contact your specialist dealer. Connection.

### Manufacturer

 **cleancraft** - Stürmer Maschinen GmbH  
Dr.-Robert-Pfleger-Straße 26;  
D-96103 Hallstadt/Bamberg

Fax: (+49) 0951 - 96555-55

Mail: [info@cleancraft.de](mailto:info@cleancraft.de)

Internet: [www.cleancraft.de](http://www.cleancraft.de)

### information on the operating instructions

original operating instructions  
according to DIN EN ISO 20607:2019

Issue: 01.08.2024

version 1.01

Language: DE

Author: TO

### product identification

water hose reel

WSAR 20-2

WSAR 30-2

article number

7560120

7560130



## 1 Security

### conventions of representation

---

• provides additional information

---

• calls you to action

---

• lists

### This part of the operating instructions

• explains the meaning and use of the symbols used in this manual.

warnings,

• specifies the intended use of the hose reel,

• draws your attention to dangers that may arise for you and other persons if these instructions are not followed could,

• informs you how to avoid dangers.

### In addition to the operating instructions, please note

• the applicable laws and regulations,

• the legal provisions for accident prevention,

• the prohibition, warning and mandatory signs.




Always keep the documentation near the hose reel.

### 1.1 Safety instructions (warnings)

#### hazard classification

We divide the safety instructions into different levels. The table below gives you a

Overview of the assignment of symbols (pictograms) and signal words to the specific hazard and the (possible) consequences.

pictogram	signal word	definition/consequences
	DANGER!	Immediate danger which will result in serious injury or death.
	WARNING!	Risk: a hazard could result in serious injury or death.
	CAUTION!	Hazard or unsafe practice that could result in injury to persons or damage to property.
	DANGER!	Situation that could result in damage to the hose reel or other damage. No risk of injury to persons.
	information	Application tips and other important/useful information and tips. No dangerous or damaging consequences for persons or property.

**1.2 Intended use** The water hose reel is intended to create a

flexible connection to a water source and the appropriate consumers (e.g. garden showers or garden sprinklers), as well as to unwind and roll up the compressed air hose.sdf

Water hose reel is suitable for a wide range of uses in different areas, e.g. home and garden use.

Proper use also includes compliance with all information in this manual.

**1.3 Reasonably foreseeable misuse** Any use of the hose reel that goes beyond the

intended use or is used in a different way is considered misuse. The operating personnel must be sufficiently qualified or have received appropriate and practical training to be allowed to operate the hose reel. To avoid misuse, the operating instructions must be read and understood before commissioning.

Possible misuse may include: ÿ Using the hose reel

outside the range specified in the “Technical Data” chapter.  
**performance limits.**

ÿ Use of the hose reel in rooms with aggressive, explosive or flammable substances ÿ The hose reel is not explosion-proof as standard ÿ Use of the hose reel in the food sector. ÿ Modifications to the hose reel or accessories. ÿ Failure to observe signs of wear and damage. ÿ Service work by untrained or unauthorized personnel. ÿ Deliberate or careless handling of the hose reel during operation. ÿ Use of the hose reel for conveying corrosive, caustic, explosive, chemically or biologically dangerous substances. ÿ Installation of spare parts and use of accessories and operating materials not provided by the manufacturer

are approved.

If the hose reel is used in a manner other than that stated under “1.2 Intended use” or is modified without the permission of Cleancraft, the hose reel is no longer being used as intended.

#### **WARNING!**

If the hose reel is not used as intended, ÿ there are risks for the personnel, ÿ the hose reel and other material assets of the operator are endangered, ÿ the function of the device may be impaired.



#### **DANGER!**

Modifications and changes to the hose reel are prohibited! They endanger people and can cause damage to the device.



Improper use of the hose reel as well as disregard of the safety regulations or the operating instructions excludes the manufacturer's liability for resulting damage to persons or objects and will void the warranty!

#### **1.4 Residual risks**

Even if all safety regulations are observed and the water hose reel is used correctly, there are still residual risks, which are listed below:

ÿ Risk of crushing of the upper and lower limbs. ÿ Risk of falling due to water hoses lying around. ÿ Danger due to kinked water hoses. ÿ Risk of injury due to hose ends under pressure, which can suddenly open if handled incorrectly.

can solve.



## 1.5 General safety instructions

PLEASE NOTE THE FOLLOWING:

- ÿ The hose must be drained of water before rolling it up and before cleaning and maintenance work.
- ÿ Always keep the hose reel and its working environment clean.
- ÿ Do not interrupt the water supply by squeezing or bending the water pipe.
- ÿ Keep children and people unfamiliar with the hose reel away.
- ÿ Before each use, make sure that no parts of the hose reel are damaged.  
Damaged parts must be replaced immediately to avoid sources of danger.
- ÿ Do not pull the water hose when it is completely unwound from the drum.
- ÿ Ensure that consumers are always disconnected before unwinding and winding the water hose.  
are.
- ÿ Never exceed the recommended maximum operating pressure.
- ÿ Use only one water source.
- ÿ Drain the water when not in use.
- ÿ The hose reel contains a tensioned spring inside, do not dismantle the housing.
- ÿ When drilling into walls with power lines, pay attention to the power lines.
- ÿ When rolling up the hose, hold it firmly until it is completely rolled up.
- ÿ The yellow tape marks the end of the water hose.
- ÿ Always keep the hose clean or clean it with a damp cloth.
- ÿ Do not turn the water hose during use.
- ÿ Install the hose reel in a protected location.



## 1.6 Safety markings

A NOTICE:

Damaged or missing safety symbols on the hose reel can lead to incorrect handling and personal injury and damage to property. The safety symbols attached to the device must not be removed. Damaged safety symbols must be replaced immediately.  
**substitute.**



The following should be noted:

- ÿ The instructions on the safety marking on the device must be followed under all circumstances  
If the safety labels fade or become damaged during the service life of the equipment, new labels must be installed immediately.
- ÿ From the moment the signs are not immediately recognizable and understandable at first glance,  
to take the device out of service until the new signs are installed.

## 2 Technical data

Technical data	WSAR 20-2	WSAR 30-2
hose length	20 m	30 m
hose inner diameter	11 mm	11 mm
hose outer diameter	15 mm	15 mm
hose material	PVC	PVC
max. operating pressure	10 bar	10 bar
burst pressure	51 bar	51 bar
connection thread type	3/4	3/4
Length (product) approx.	526 mm	604.9 mm
Width (product) approx.	200.5 mm	261.28 mm
Height (product) approx.	396.6 mm	430.53 mm
Weight	6.3 kg	12.5 kg
connection hose length	2 m	2 m
connection hose inner diameter	11 mm	11 mm
connection hose outer diameter	15 mm	15 mm
hose material	PVC	PVC
burst pressure	30	30

### 2.1 Type plate



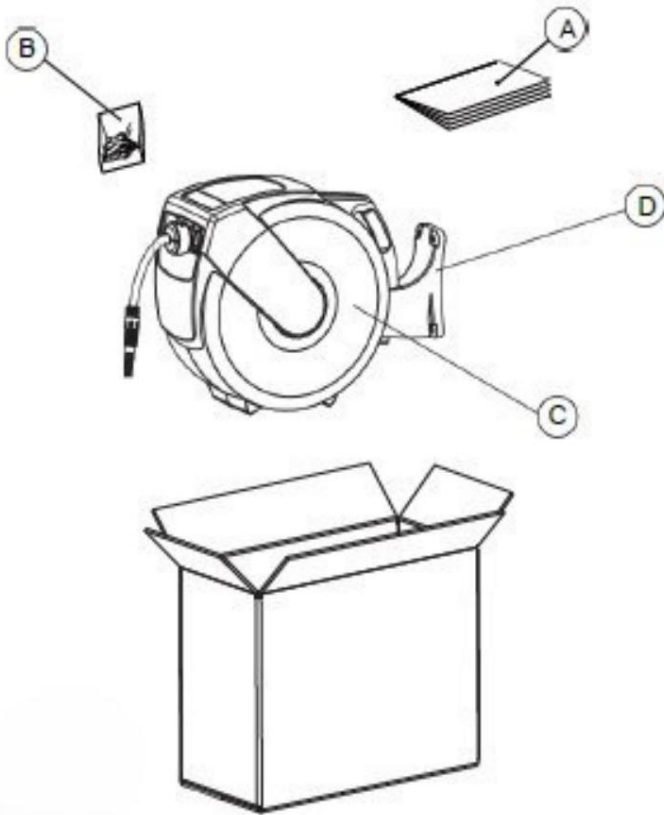
<b>Wasserschlauchaufroller</b>			
Water hose reel			
Typ Type	<b>WSAR 20-2</b>	Serien-Nr. Serial no.	<input type="text"/>
Artikel-Nr. Item no.	<b>7560120</b>	Baujahr <small>Monat/Jahr</small> Year of manufacture <small>month/year</small>	<input type="text"/>
Gewicht Weight	<b>6,3 kg</b>	Schlauchlänge Hose length	<b>20 m</b>
 www.cleancraft.de		Stürmer Maschinen GmbH Dr.-Robert-Pfleger-Str. 26, 96103 Hallstadt Deutschland / Germany	

Fig.2-1: Type plate WSAR 20-2



### 3 Device description

WSAR 20-2 & WSAR 30-2



A = Operating instructions

B = screw accessories

B1 = screw (4x)

B2 = Washer (4x)

B3 = dowel (4x)

C = hose reel

D = mounting bracket

Fig.3-1: Device description

### 3.1 Dimensions

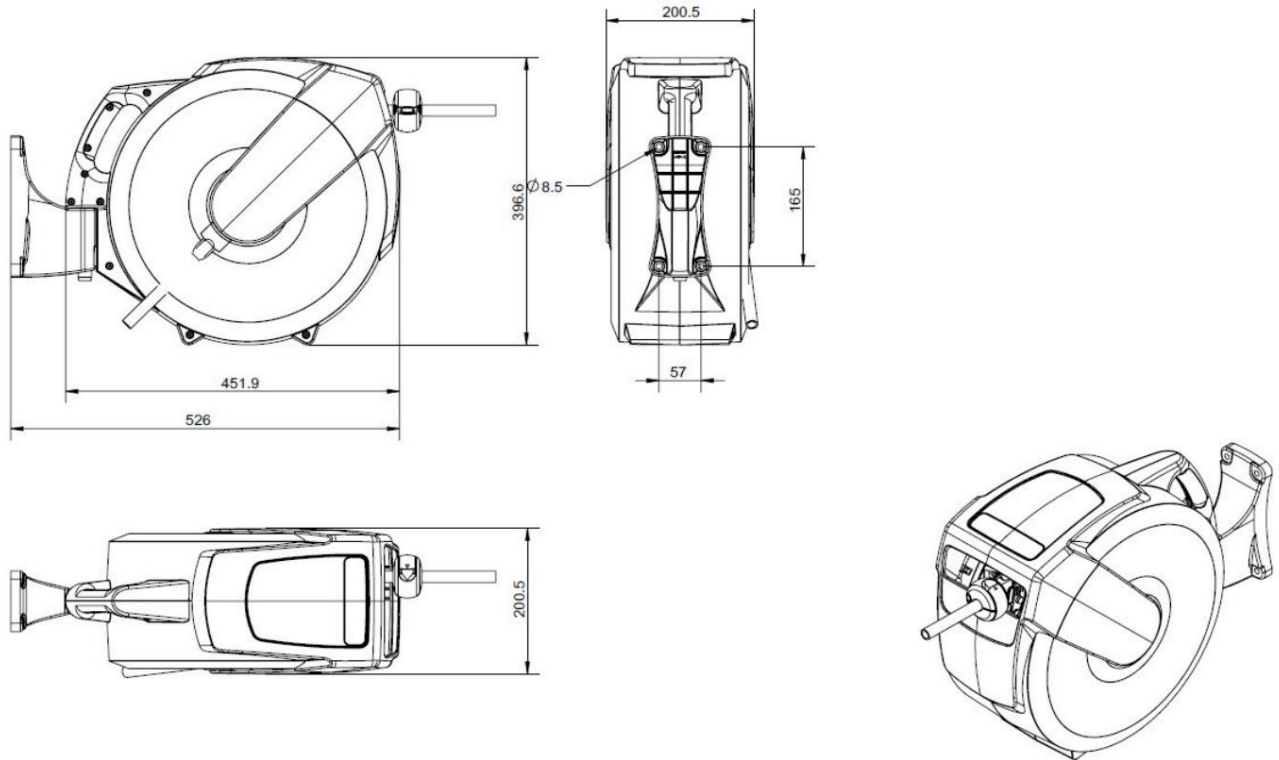


Fig.3-2: Dimensions WSAR 20-2

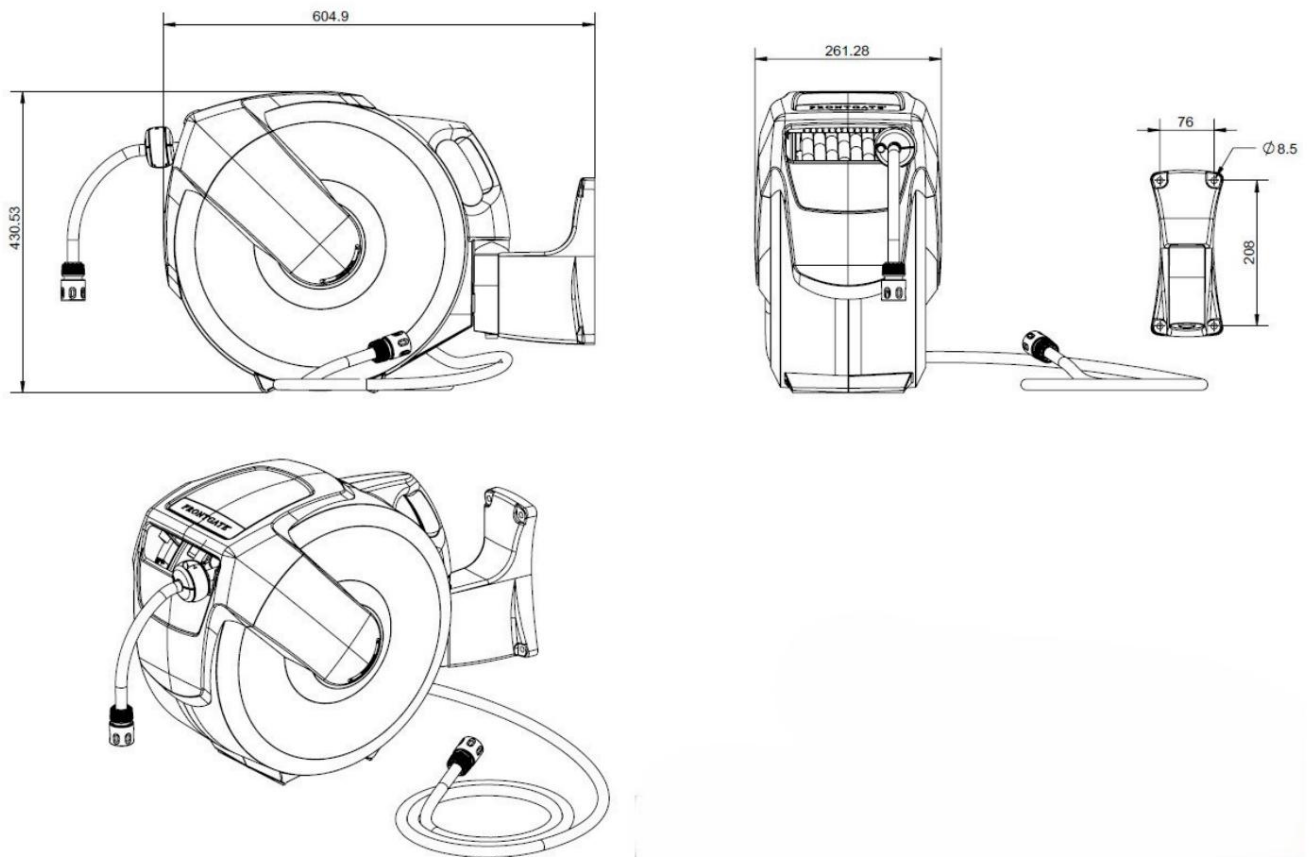


Fig.3-3: Dimensions WSAR 30-2



## 4 Transport and assembly

### 4.1 Delivery After

delivery, check the hose reel for visible transport damage. If the device shows any damage, this must be reported immediately to the transport company or the dealer.

### 4.2 Packaging All

packaging materials and packaging aids used for the device are recyclable and must always be recycled.

Cardboard packaging components must be shredded and disposed of as waste paper.

The films are made of polyethylene (PE) and the upholstery parts are made of polystyrene (PS). These materials must be handed in at a recycling center or to the responsible waste disposal company.

### 4.3 Storage Store

the device thoroughly cleaned in a dry, clean and frost-free environment.

### 4.4 Assembly

#### WARNING!

ÿ Incorrect installation may result in injury. ÿ Make sure that the mounting wall can support at least 100 kg. ÿ Pay attention to power and water pipes in the wall. ÿ Observe the safety regulations for a drill when drilling the holes.



#### 4.4.1 Selection of a suitable installation location

This product can be mounted in many different ways. It is important to choose the mounting location carefully. Consider mounting to surfaces.

1. Close to your water source. These water hose reels include a 20m (WSAR 20-2) or 30m (WSAR 30-2) outlet hose. Make sure you have this length to reach your garden.
2. Close to your water supply. These water hose reels come with a 2m inlet hose. Make sure the inlet hose reaches your water supply.
3. Out of direct sunlight.
4. The mounting wall must be able to support at least 100 kg.

#### 4.4.2 Installation on a wooden structure

WSAR 20-2

WSAR 30-2

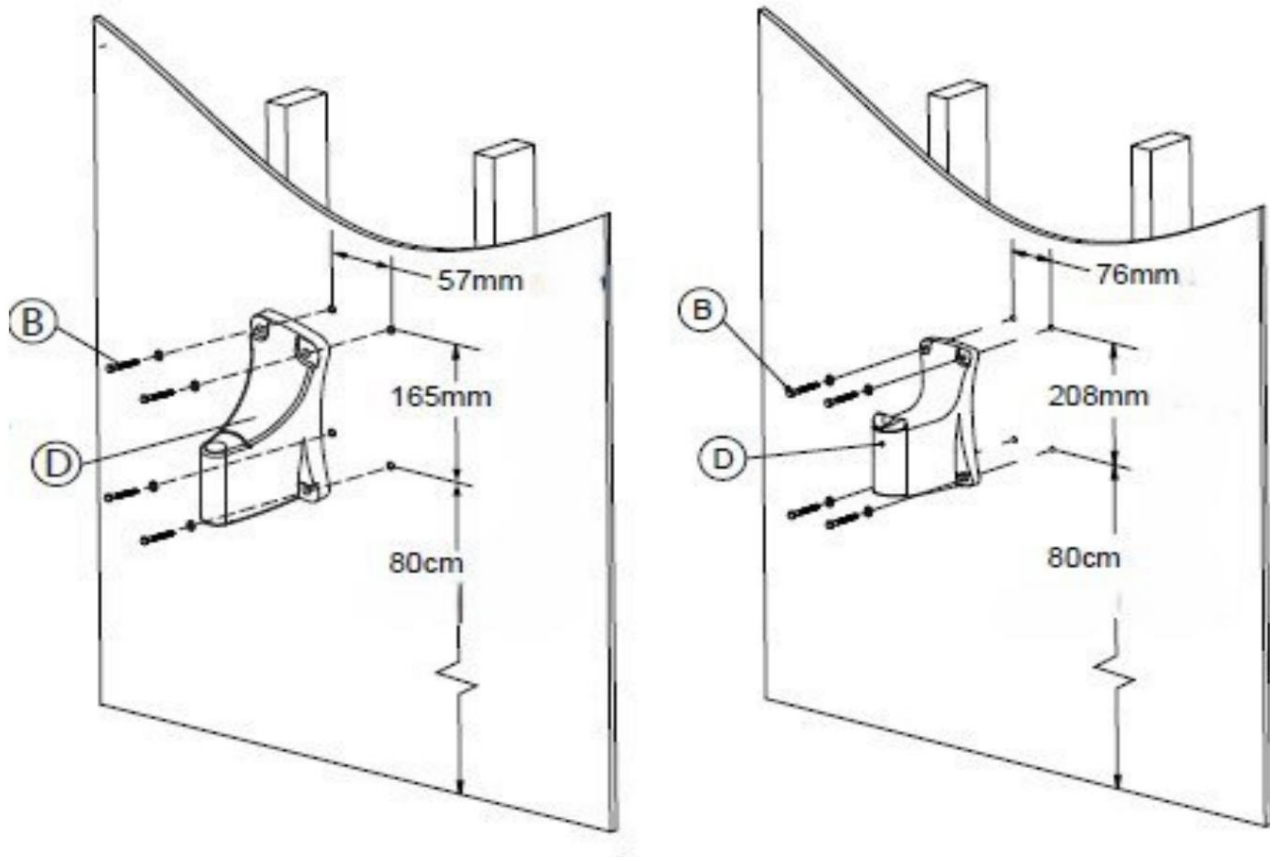
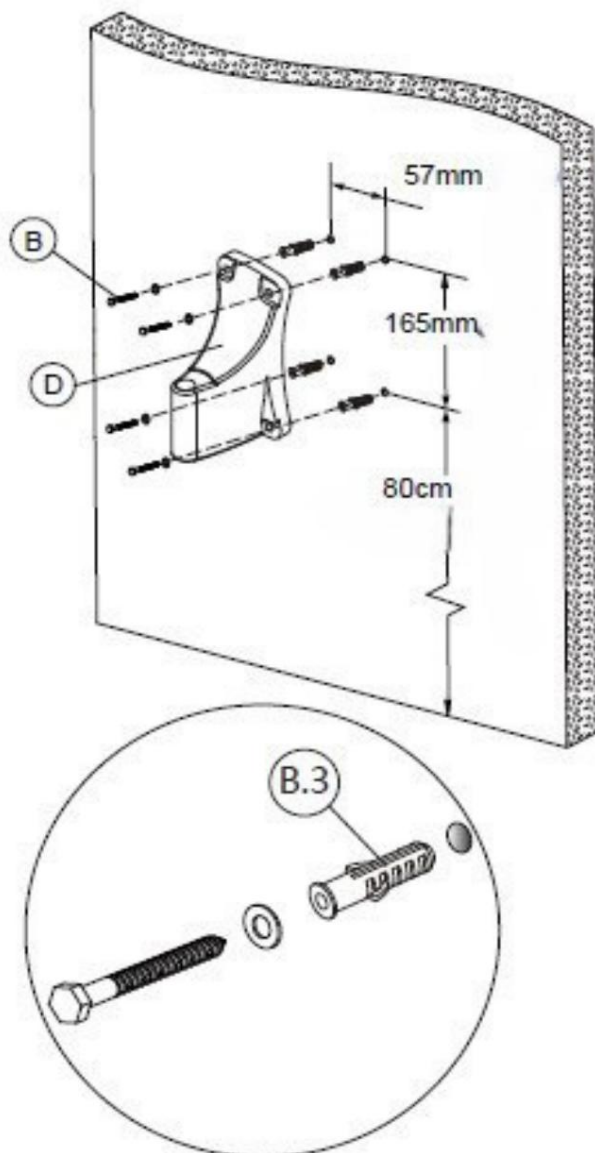


Fig.4-1: Assembly of wooden construction

1. Use a cable locator to locate power lines so that they are not drilled into can.
2. Stick the drilling template to the desired mounting location.  
Please note step 1 regarding the power lines and consider the corresponding model of your hose reel when selecting the drilling template.
3. Use the spirit level to check whether the drill holes are horizontal.
4. Drill four holes with a diameter of 3 mm at the markings on the drilling template.
5. Fasten the mounting plate (D) with the four screws and washer.
6. Hang the hose reel on the wall bracket and secure it by inserting the mounting tube insert.
7. Connect the inlet hose to your water source.

#### 4.4.3 Installation on a hollow or masonry wall

##### WSAR 20-2



##### WSAR 30-2

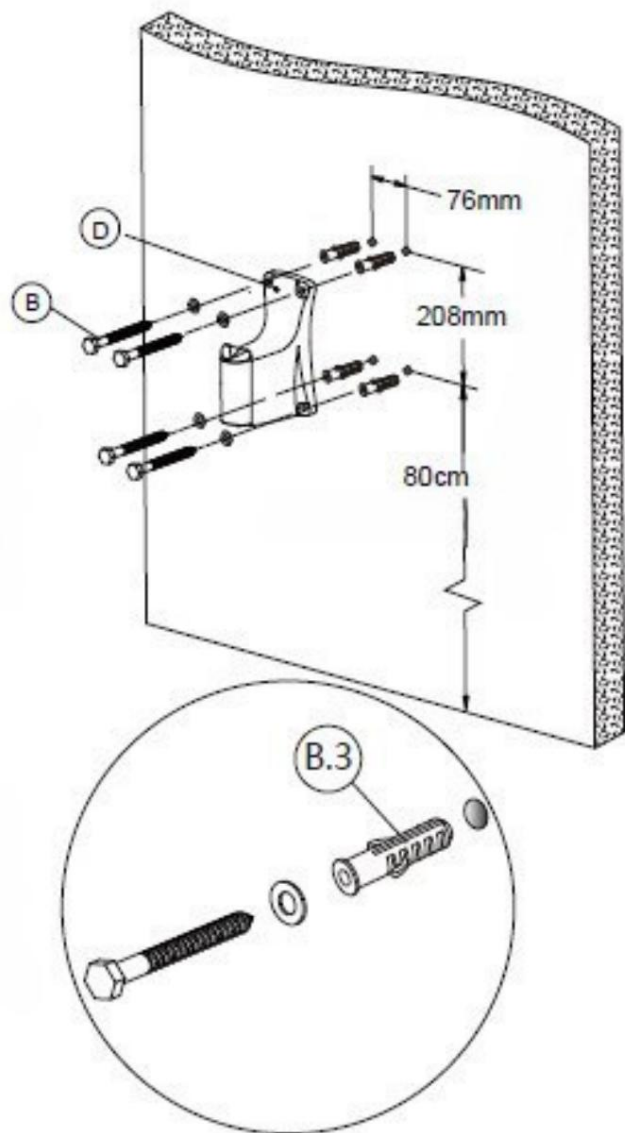


Fig.4-2: Installation of hollow or masonry wall

1. Use a cable locator to locate power lines so that they are not drilled into can.
2. Stick the drilling template to the desired mounting location.  
Please note step 1 regarding the power lines and consider the corresponding model of your hose reel when selecting the drilling template.
3. Use the spirit level to check whether the drill holes are horizontal.
4. Drill four holes with a diameter of 10 mm at the markings on the drilling template.
5. Tap the 4 dowels (B3) into the drilled holes.
6. Fasten the mounting plate (D) with the four screws and washer.
7. Hang the hose reel on the wall bracket and secure it by inserting the mounting tube insert.
8. Connect the inlet hose to your water source.

## 5 Operation

### WARNING!

• Only operate the device if it is in perfect technical condition.

• The maximum pressure specified must not be exceeded. • When rolling up the hose, always hold it until it is completely rolled up. • The yellow tape marks the end of the hose. • Release the pressure when rolling up.



• Pull the hose out to the desired length; it will now lock into place automatically. • To unlock and roll up, pull the hose briefly. Guide the hose back to the hose reel. If you pull the hose out further than 10 cm, it will block again. • To avoid injuries and damage, always hold the hose firmly while rolling it up.

This hose reel has a controlled rewind function.

• If the hose becomes tangled and will not retract, slowly pull the hose past the tangled section and then allow it to retract slowly while feeding it back into the hose reel. Always make sure the hose is clean and not twisted.

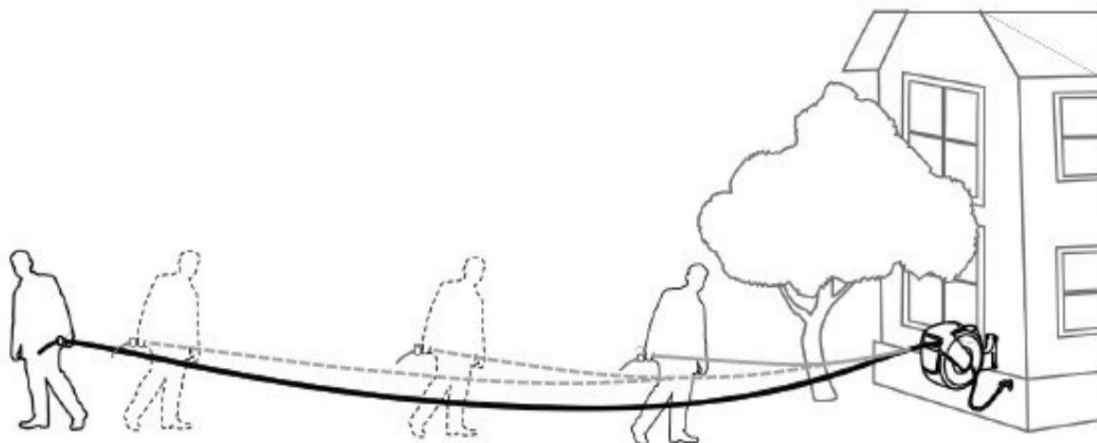


Fig.5-1: Operation

### 5.1 Adjusting the stop ball The position of the stop ball

can be adjusted so that the hose is always within reach. • Pull the hose out to the desired length. • Open the lock on the stop ball and attach it to the desired position. • Now close the lock again.

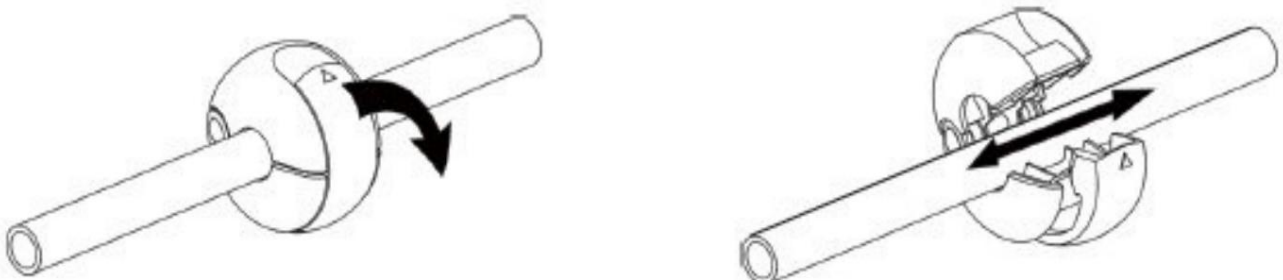


Fig.5-2: Stop ball



## 6 care and maintenance

Regular and conscientious maintenance of the hose reel is a basic requirement for a long service life, good working conditions and maximum productivity of the hose reel.

ensure that maintenance work is carried out regularly. • Clean

all plastic parts and painted surfaces with a soft, damp cloth and a little

Clean with neutral cleaner.

• Water hoses must be checked at regular intervals for damage and leaks check. The damaged hoses must be replaced.

• Dry the hose before winding it back onto the reel.

• Regularly check the screw connections for tightness. Tighten them if necessary after.

• All plastic parts and painted surfaces should be cleaned with a soft, damp cloth and a little neutral cleaner.

• After maintenance, repair and cleaning work, check that all panels and protective devices have been properly reinstalled.

• Always retract the water hose when not in use.

A NOTICE:

If maintenance and repair work on this device is carried out by persons who are not authorized to carry out these works, the warranty claim against



## 7 spare parts

Risk of injury due to the use of incorrect spare parts!

The use of incorrect or faulty spare parts may endanger the operator and may cause damage and malfunctions.



Stürmer Maschinen GmbH accepts no liability and provides no guarantee for damage or malfunctions resulting from non-compliance with these operating instructions. For repairs, only use flawless and suitable tools, original spare parts or series parts expressly approved by Stürmer Maschinen GmbH.

Using unauthorized spare parts will void the manufacturer's warranty.

Information about technical support

Repairs covered by the warranty may only be carried out by service technicians authorized by us. Only use original spare parts.

### 7.1 Ordering spare parts

The spare parts can be obtained from the specialist dealer.

Send a copy of the spare parts drawing with the marked components to the specialist dealer and state the following:

- Article number
- Device name
- Date of manufacture
- Position numbers of the components and, if applicable, associated spare part drawing number
- Quantity
- Desired shipping method (post, freight, sea, air, express)
- Shipping address

Spare parts orders without the above information cannot be considered. If the shipping method is not specified, shipping will be at the supplier's discretion.

Information about the device type, article number and year of manufacture can be found on the type plate which is attached to the hose reel is attached.

#### Example

The "top cover" for the hose reel WSAR 20-2 must be ordered. The cover has the spare parts drawing the number 5.

**When ordering spare parts, send a copy of the spare parts drawing with the marked component (upper cover) and marked position number (5) to the authorized dealer and provide the following information:**

- |                                |                          |
|--------------------------------|--------------------------|
| • Article number               | 7560120                  |
| • Model name • Position number | hose reel WSAR 20-2<br>5 |



### 7.2 Spare parts drawing WSAR 20-2

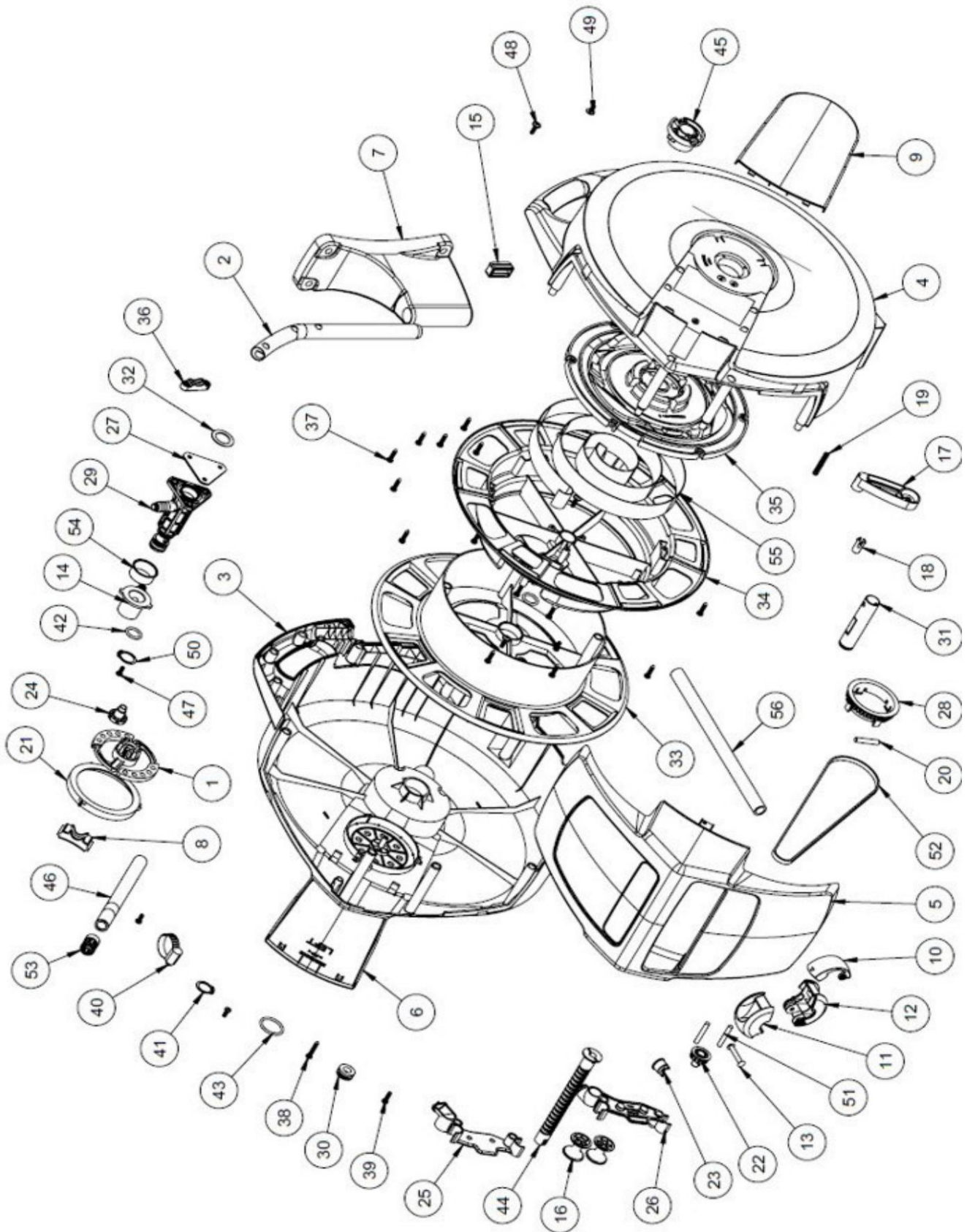


Fig.7-1: Spare parts drawing WSAR 20-2

### 7.3 Spare parts drawing WSAR 30-2

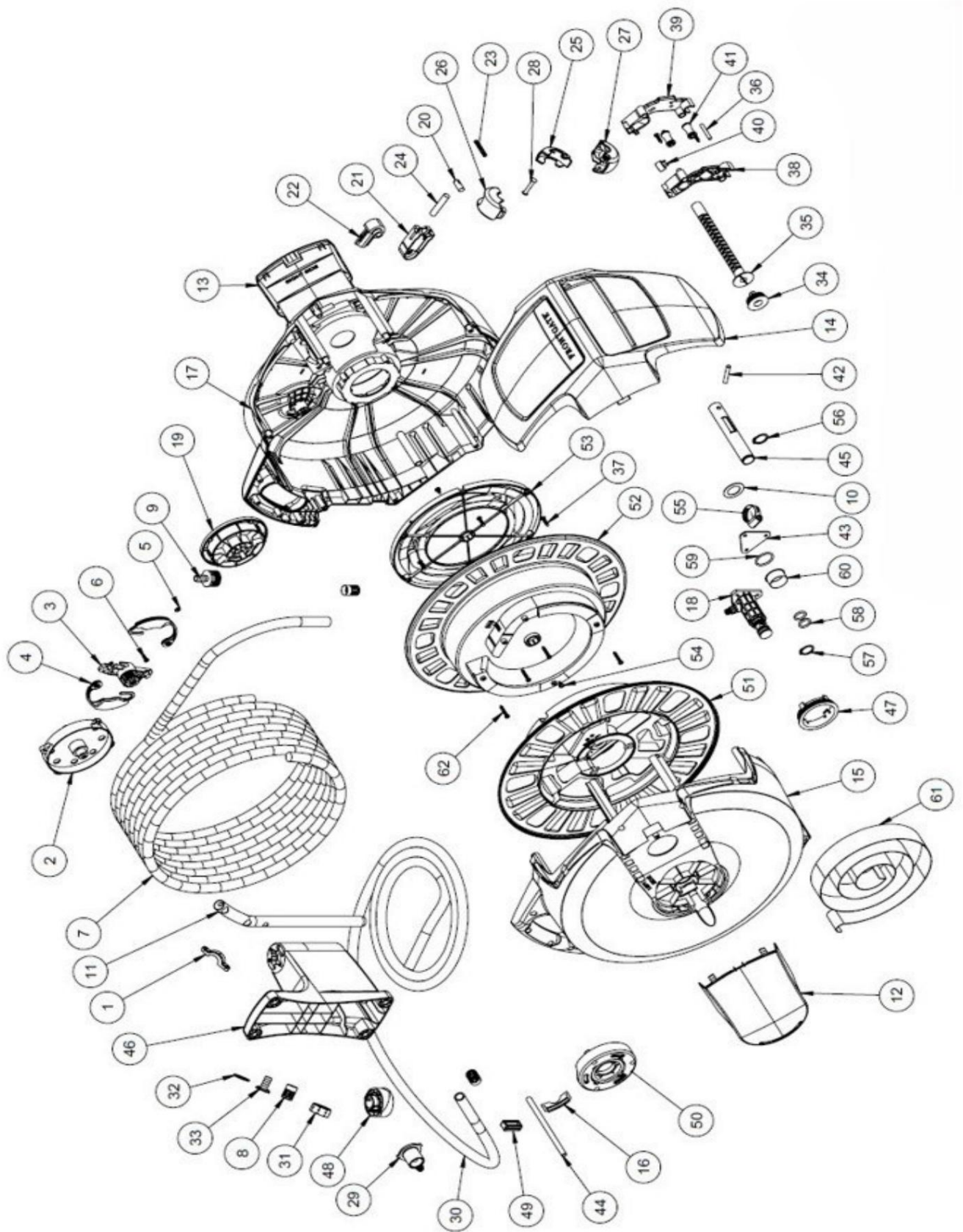


Fig.7-2: Spare parts drawing WSAR 30-2



## 8 EU Declaration of Conformity

According to Machinery Directive 2006/42/EC Annex II 1.A

Manufacturer / Distributor:

Stürmer Maschinen GmbH  
Dr.-Robert-Pfleger-Straße 26  
96103 Hallstadt

Product group:



Type designation:

water hose reel

article number

Product name: \*

- WSAR 20-2  
 WSAR 30-2

7560120  
7560130

Serial number: \*

\_\_\_\_\_

Year of construction: \*

20\_\_\_\_

\* Please fill in these fields according to the information on the type plate

complies with all relevant provisions of the above-mentioned Directive and the other applicable Directives (hereinafter) – including any amendments thereto in force at the time of the declaration.

Relevant EU Directive:

2014/68/EU

Pressure Equipment Directive

Relevant EU regulation:

(EU) 2020/2096 REACH Regulation

The following harmonized standards were applied:

EN ISO 12100:2010

Safety of machinery - General principles for design - Risk assessment and risk reduction

Name and address of the person authorised to compile the technical documentation:

Kilian Stürmer, Dr.-Robert-Pfleger-Straße 26, 96103 Hallstadt

Kilian Stürmer (Managing Director)  
Hallstadt, August 1, 2024



## 9 Appendix

### 9.1 Copyright

The contents of this manual are protected by copyright and are the sole property of Stürmer Maschinen GmbH. Their use is permitted within the scope of using the hose reel.

Any other use is not permitted without the written permission of the manufacturer.

Distribution, copying and use of this document as well as communication of its contents is prohibited unless expressly permitted.

Violations will result in compensation for damages.

To protect our products, we register trademark, patent and design rights wherever possible.

We strongly oppose any infringement of our intellectual property rights.

Technical changes reserved at any time.

### 9.2 Storage

#### DANGER!

If stored incorrectly or improperly, electrical and mechanical components may be damaged or destroyed.



Store the packed or unpacked parts only under the intended environmental conditions.

If the device and accessories need to be stored for longer than three months and under environmental conditions other than those specified, consult your dealer.

### 9.3 Disposal instructions / recycling options Please dispose of your water

hose reel in an environmentally friendly manner by disposing of waste properly rather than in the environment.

Please do not simply throw away the packaging and later the used water hose reel, but dispose of both in accordance with the guidelines set by your city/municipal administration or the responsible waste disposal company.

#### 9.3.1 Decommissioning

#### CAUTION!

Devices that are no longer in use must be taken out of service immediately and properly to avoid subsequent misuse and danger to the environment or people. • Remove batteries, if

present. • If necessary, dismantle the device into manageable

and reusable assemblies and components. • Dispose of the device components in the designated disposal routes .



#### 9.3.2 Disposal of new device packaging

All packaging materials and packaging aids used in the device are recyclable and must always be recycled.

The packaging wood can be disposed of or recycled.

Cardboard packaging components can be shredded and disposed of as waste paper.

The films are made of polyethylene (PE) and the upholstery parts are made of polystyrene (PS). These materials can be reused after processing if they are handed over to a recycling center or to your local waste disposal company.

Only pass on packaging material in sorted form so that it can be reused immediately.



### 9.3.3 Disposal of the old device

#### INFORMATION

In your own interest and in the interest of the environment, please ensure that all components of the device are disposed of only via the intended and approved methods.



Please note that electrical devices contain a variety of recyclable materials as well as environmentally harmful components. Please help to ensure that these components are separated and disposed of properly. If in doubt, please contact your local waste disposal service. If necessary, you may need to seek the help of a specialist disposal company for processing.

### 9.3.4 Disposal of electrical and electronic components

Please ensure that electrical components are disposed of properly and in accordance with legal regulations.

The device contains electrical and electronic components and must not be disposed of as household waste.

According to the European Directive on Waste Electrical and Electronic Equipment and its implementation in national law, used power tools and electrical equipment and machines must be collected separately and recycled in an environmentally friendly manner.

As an operator, you should obtain information about the authorized collection or disposal system that applies to you.

Please ensure that batteries and/or rechargeable batteries are disposed of properly and in accordance with legal regulations. Please only throw discharged batteries into the collection boxes at retailers or municipal waste disposal companies.

9.4 Disposal via municipal collection points Disposal of used electrical and electronic equipment (Applicable in the countries of the European Union and other European countries with a separate collection system for these devices).



The symbol on the product or on its packaging indicates that this product shall not be treated as household waste. Instead, it shall be handed over to the applicable collection point for the recycling of electrical and electronic equipment.

By ensuring this product is disposed of correctly, you will help protect the environment and health. Incorrect disposal poses a risk to the environment and health. Recycling materials helps reduce the consumption of raw materials. For more information about recycling of this product, please contact your local council, your household waste disposal service or the shop where you purchased the product.

## 10 Product Observation

We are obliged to monitor our products even after delivery.

Please tell us anything that is of interest to us:

• Changed setting data.

• Experiences with the hose reel that are important for other users. • Recurring faults.

Stürmer Maschinen GmbH Dr.-  
Robert-Pfleger-Str. 26 D-96103  
Hallstadt

Fax: (+49)0951 96555-55 Email:  
info@stuermer-maschinen.de



## 11 notes





**stürmer**  
WELT DER  
MASCHINEN

**Stürmer Maschinen GmbH**  
Dr.-Robert-Pfleger-Straße 26  
D-96103 Hallstadt  
+49 951 96 555 - 0  
info@stuermer-maschinen.de  
www.stuermer-maschinen.de



[www.stma.de/youtube-de](http://www.stma.de/youtube-de)



[www.facebook.com/stuermer.maschinen.gmbh](http://www.facebook.com/stuermer.maschinen.gmbh)



[www.xing.com/companies/stuermermaschinen.gmbh](http://www.xing.com/companies/stuermermaschinen.gmbh)



[www.linkedin.com/company/8690471](http://www.linkedin.com/company/8690471)