

Operating instructions

Water hose cart

■ WSW 45



WSW 45





Table of contents

1 Safety.....	4 1.1 Safety Instructions
(Warnings)	4 1.2 Intended
Use.....	5 1.3 Reasonably Foreseeable
Misuse.....	5 1.4 Residual
Risks	6 1.5 General Safety
Instructions.....	6 1.6 Safety
Markings	7
2 Technical Data	7 2.1 Type
Plate.....	7 3 Device
Description	8 4 Transport and
Installation	8 4.1
Delivery.....	8 4.2
Packaging.....	8 4.3
Storage.....	8 4.4
Installation	9
5 Commissioning	10
6 Operation.....	10
6.1 Winding and unwinding the hose.....	10 6.2
Warnings.....	10
7 Care and Maintenance	10 8 Troubleshooting
Table	11 9 Spare
Parts	12 9.1 Ordering Spare
Parts.....	12 9.2 Spare Parts
Drawings.....	13 10 Product Safety
Declaration	20 11
Appendix	21 11.1
Copyright	21 11.2
Storage.....	21 11.3 Disposal Information / Recycling
Options.....	21 11.4 Disposal via Municipal Collection
Points	22 12 Product
Monitoring.....	22 13
Notes	23



Foreword

Dear Customer,

Thank you very much for purchasing the **cleancraft**-Water hose cart.

cleancraft Water hose reels offer the highest level of quality, technically optimal solutions and They impress with an outstanding price-performance ratio. Continuous development and Product innovations ensure that technology and safety are always up to date.

Before commissioning, please read these operating instructions thoroughly and familiarize yourself with the product. Water hose cart familiar. Also make sure that all persons who use the water hose cart are familiar with it. Always read and understand the operating instructions before using the device. Keep these instructions in a safe place. Carefully place the operating instructions in the area of the water hose cart.

information

The operating instructions contain information on safe and proper installation, operation and Maintenance of the water hose cart. Constant adherence to all instructions contained in this manual is essential. Instructions ensure the safety of people and the water hose truck.

The manual defines the intended purpose of the water hose cart and contains all the necessary information. Information on its economic operation and its long lifespan.

The Maintenance section describes all maintenance work and functional tests that the user must perform. must be carried out regularly.

The illustrations and information contained in this manual may be subject to change.

The current construction status of your water hose reel may differ. As the manufacturer, we are constantly striving for a We strive to improve and renew our products; therefore, changes may be made. without prior announcement. The images of the water hose cart may change in Some details may differ from the illustrations in this manual; however, this does not affect the Ease of use of the water hose cart.

No claims can therefore be derived from the information and descriptions provided. Changes and We reserve the right to correct errors!

Your suggestions regarding these operating instructions are an important contribution to optimizing our work. which we offer our customers. Please contact us with any questions or suggestions for improvement. our service.

Should you have any further questions after reading these operating instructions, or should you encounter a problem If you cannot resolve the issue using these operating instructions, please contact your specialist dealer. Connection.

Manufacturer

cleancraft - Stürmer Maschinen GmbH
Dr.-Robert-Pfleger-Straße 26;
D-96103 Hallstadt/Bamberg

Fax: (+49) 0951 - 96555-55

Mail: info@cleancraft.de

Internet: www.cleancraft.de

Information on the operating instructions

Original operating instructions
according to DIN EN ISO 20607:2019

Edition: January 14, 2026
version 1.01

Language: German
Author: LA

Product identification

Water hose cart
WSW 45

Article number
7560245



1 Security

Conventions of representation

• provides additional information

• prompts you to take action

• Enumerations

This part of the operating instructions

• explains the meaning and use of the terms used in this operating manual

Warning notices,

• defines the intended use of the water hose cart,

• points out the dangers that may arise for you and others if these instructions are not followed.
could

• informs you about how to avoid dangers.

Please note the following in addition to the operating instructions.

the applicable laws and regulations,

the legal provisions for accident prevention ,

• the prohibition, warning and mandatory signs.




Always keep the documentation near the water hose cart.

1.1 Safety instructions (warnings)

Hazard classification

We divide the safety instructions into different levels. The table below gives you an overview.

Overview of the assignment of symbols (pictograms) and signal words to the specific hazard and the (possible) consequences.

pictogram	Signal word	Definition/Consequences
	DANGER!	Immediate danger that will result in serious injury or death.
	WARNING!	Risk: a dangerous situation could lead to serious injury or death.
	CAUTION!	Dangerous or unsafe procedures that could lead to personal injury or property damage.
	DANGER!	A situation that could lead to damage to the water hose truck as well as other damage. No risk of injury to people.
	information	Application tips and other important/useful information and advice. No dangerous or harmful consequences for persons or property.

1.2 Intended Use The WSW 45 water hose cart is

intended exclusively for receiving, transporting and orderly unwinding and winding of a suitable water hose and serves as a flexible connection between a water supply point and the water-carrying consumers intended for it.

The product is to be used exclusively with water, in compliance with the intended operating conditions and all information and safety instructions in this operating manual.

Any use beyond or deviating from this is considered improper.

1.3 Reasonably foreseeable misuse

Any use of the WSW 45 water hose cart beyond or deviating from the instructions in the "Intended Use" section is considered misuse. The water hose cart may only be operated by persons who are adequately qualified or have received appropriate, practical training. To avoid misuse, the operating instructions must be read and understood completely before commissioning.

Possible, reasonably foreseeable misuses include:

• Use of the water hose truck outside the operating conditions specified in the chapter "Technical Data" and performance limits

Operation of the water hose truck in environments with aggressive, explosive or flammable substances, because the water hose cart is not explosion-proof as standard.

• Use of the water hose cart in the food sector • Modifications to the water hose cart or to accessories and attachments • Failure to observe signs of wear and tear and damage • Carrying out maintenance, service or repair work by untrained or unauthorized personnel staff

• Deliberate or reckless handling of the water hose cart during operation • Use of the water hose cart for conveying corrosive, caustic, explosive, and chemical substances or biologically hazardous substances

• Installation of spare parts and use of accessories and operating materials not supplied by the manufacturer are released

If the WSW 45 water hose cart is used in a manner other than described under "Intended Use" or modified without the authorization of Cleancraft, the water hose cart is considered to be used improperly. In this case, the manufacturer assumes no liability for any resulting damage.

WARNING!

Improper use of the water hose cart • creates dangers for personnel, • endangers the water hose cart and other assets of the operator, • impairs the function of the device.



DANGER!

Modifications and alterations to the water hose cart are prohibited! They endanger people and can damage the equipment.

Improper use of the water hose cart, as well as disregard for safety regulations or operating instructions, excludes the manufacturer's liability for resulting damage to persons or property and voids the warranty!





1.4 Residual risks

Even if all safety regulations are observed and the WSW 45 water hose cart is used as intended, residual risks due to its design and application cannot be completely eliminated. Users must be made aware of these residual risks and take them into account during use.

Possible residual risks include:

- Risk of crushing upper and lower limbs, especially when rolling the bag up and down **water hose or when maneuvering the water hose cart**
- Risk of falls and trips due to improperly stored or lying water hoses
Functional and safety risks due to kinked, twisted or damaged water hoses
- Risk of injury from pressurized hose ends that can suddenly detach if handled improperly or incorrectly

The user is obliged to take these residual risks into account when working with the WSW 45 water hose cart .
to take this into account and take appropriate precautions.

1.5 General Safety Instructions

The following safety instructions must be strictly observed to ensure the safe operation of the WSW 45 water hose cart and to avoid dangers to persons and property.

PLEASE NOTE THE FOLLOWING:



- Before coiling the water hose and before cleaning and maintenance work **to ensure that the hose is depressurized and empty of water.**
 - Keep the water hose cart and its working environment clean and free of obstacles at all times.
Never interrupt the water supply by squeezing, kinking, or sharply bending the **Water pipe.**
 - Keep children and people unfamiliar with the water hose cart away from the device.
 - Check the water hose reel for damage before each use. Damaged or **Worn components must be replaced immediately to avoid hazards.**
 - Do not pull the water hose out any further once it is completely off the hose reel.
has been completed.
 - Ensure that connected appliances are always unplugged before uncoiling and rewinding the water hose.
are separated from the hose.
 - Never exceed the recommended maximum operating pressure.
 - Use only a suitable water source.
 - When not in use, drain all water from the hose.
 - The water hose reel contains a pre-tensioned spring inside. The housing must not **be dismantled.**
- When carrying out assembly or drilling work on walls, **take care not to damage any existing electrical wiring or other supply lines.**

- Hold the water hose firmly while winding it up until it is completely wound up.
- The yellow band marks the end of the water hose and must not be covered.
- Keep the water hose clean at all times, or clean it with a damp cloth if necessary.
- Do not twist the water hose during use.

Mount the water hose cart in a protected location to avoid damage from external influences.

**Strict adherence to these safety instructions is a prerequisite for safe and trouble-free operation.
Operation of the WSW 45 water hose truck.**

1.6 Safety markings

A NOTICE:

Damaged or missing safety symbols on the water hose reel can lead to errors resulting in personal injury and property damage. The safety symbols affixed to the device must not be removed. Damaged safety symbols must be reported immediately. substitute.



Please note the following:

The instructions on the safety label on the device must be followed under all circumstances .

If the safety markings fade or become damaged during the device's lifetime, new signs must be affixed immediately.

From the moment the signs are not immediately recognizable and understandable at first glance, to take the device out of service until the new signs are installed.

2 Technical Data

Technical data	WSW 45
Length x Width x Height (product) approx.	565x368x924 mm
Weight (net) approx.	12 kg
Hose inner diameter	11 mm
Hose outer diameter	15 mm
hose length	45 m
Hose material	PVC
Connection hose length	2 m
Operating pressure	8 bar
Burst pressure	24 bar
Connection thread type	3/4"
Connection hose inner diameter 11 mm	
Connection hose outer diameter 15 mm	
Connection hose material	PVC

2.1 Type plate


Wasserschlauchwagen Water hose cart			
Typ Type	WSW 45	Serien-Nr. Serial no.	<input type="text"/>
Artikel-Nr. Item no.	7560245	Baujahr <small>Monat/Jahr</small> Year of manufacture <small>month/year</small>	<input type="text"/>
Gewicht Weight	12 kg	Schlauchlänge Hose length	45 m
 www.cleancraft.de		Stürmer Maschinen GmbH Dr.-Robert-Pfleger-Str. 26, 96103 Hallstadt Deutschland / Germany	

Fig. 2-1: Type plate WSW 45

3 Device description

WSW 45

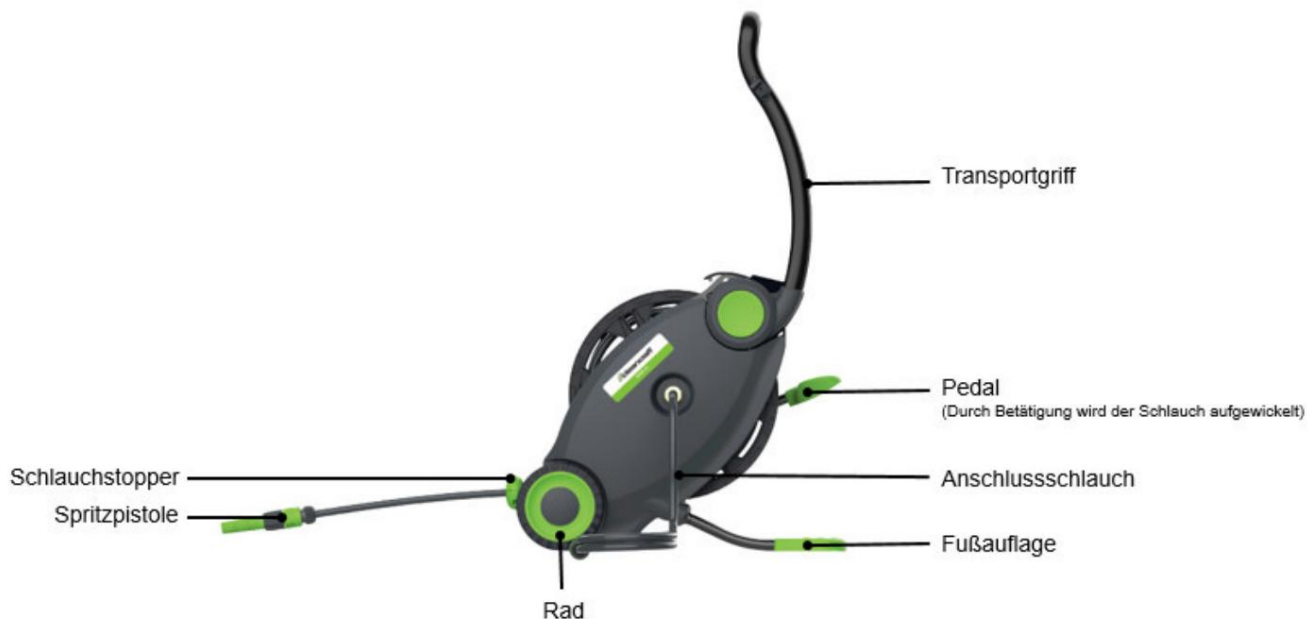


Fig. 3-1: Device description

4 Transport and assembly

4.1 Delivery Upon delivery,

inspect the water hose reel for visible transport damage. Any damage must be reported immediately to the transport company or the retailer.

4.2 Packaging All packaging

materials and packing aids used for the device are recyclable and must, in principle, be recycled.

Cardboard packaging components should be shredded and placed in the waste paper collection.

The films are made of polyethylene (PE) and the padding parts of polystyrene (PS). These materials should be taken to a recycling center or the responsible waste disposal company.

4.3 Storage Store the

device thoroughly cleaned in a dry, clean and frost-free environment.

4.4 Assembly

1. Insert the metal tubes into the footrest and connect them to the main body tube until the push button clicks into place. Check that the wheels are correctly connected by gently pulling on them (Fig. 4-1).

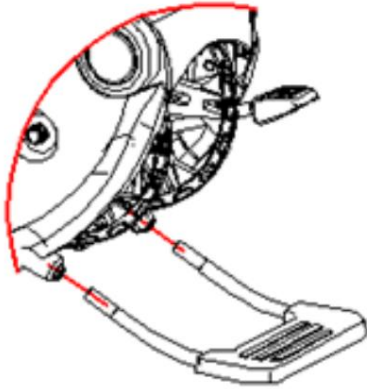


Fig. 4-1: Assembly of the footrest

2. Attach the hose holder to the designated plastic part on the handle using a screwdriver. (Fig. 4-2).

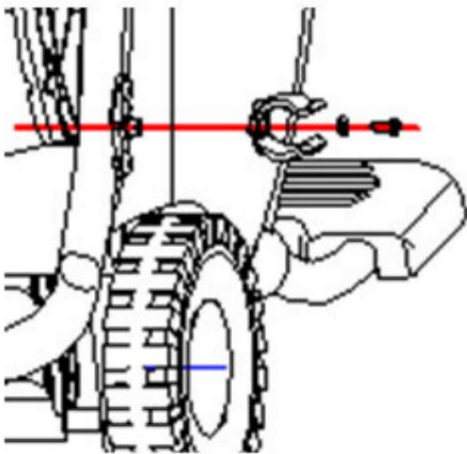


Fig. 4-2: Mounting the hose holder

3. Mount the wheels on the axles, insert washers and cotter pins, bend the ends of the cotter pins over, and attach the hubcaps. Repeat the process for the second wheel (Fig. 4-3).

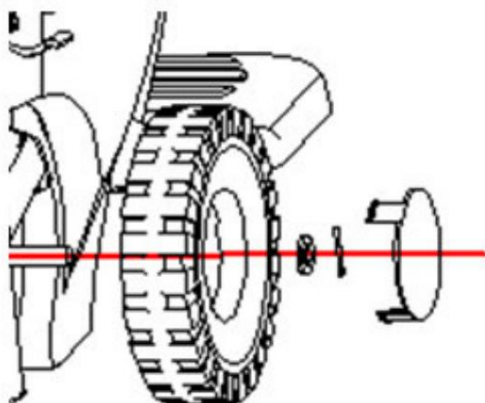


Fig. 4-3: Assembly of the wheels



5 Commissioning

WARNING!

Only operate the device if it is in perfect working order.

The specified maximum pressure must not be exceeded.

Release pressure when rolling up.



1. Lift the handle until the two side locking buttons click into place.
2. Connect one end of the connecting hose to the inlet of the water hose reel and the other end is with the water source.
3. Open the tap.

6 Operation

6.1 Unwinding and winding the hose

To be processed:

- ÿ Pull the hose out to the desired length.

Winding

- ÿ Guide the end of the hose back to the hose reel.
- ÿ Close the tap, disconnect the main connection and hang the hose in the Hose holder.
- ÿ Stand with both hands on the handle at the back of the hose reel. Wind the hose winds up by continuously pressing the pedal. Larger steps accelerate the winding process.
- ÿ Finally, lock the hose stopper at the end of the hose to prevent complete retraction. impede.

6.2 Warnings

1. Do not step on the footrest while the hose is being pulled out.
2. Pull the hose out evenly. Avoid abrupt stops or very high pressure. Speed. Check if the hose is kinked or if the footrest is correctly locked.
3. Before retracting the hose, make sure the spray gun is near the water hose cart is placed there.
4. Regularly check that the hose is wound evenly before activating the footrest.

7 Care and maintenance

Regular and thorough maintenance of the water hose cart is a basic requirement for a Long service life, good working conditions, and maximum productivity of the water hose cart. Ensure that maintenance is carried out regularly. Clean all plastic parts and painted surfaces with a soft, damp cloth and a little...

Clean with neutral cleaner.

Water hoses should be checked regularly for damage and leaks.

Check. Damaged hoses must be replaced.

Dry the hose before winding it back onto the reel.

Regularly check that the screws are tight. Tighten them if necessary. after.

All plastic parts and painted surfaces should be cleaned with a soft, damp cloth and a little water .

They can be cleaned with neutral cleaners.

- ÿ After maintenance, repair and cleaning work, check that all covers and protective devices are properly reinstalled.

Always retract the water hose when it is not in use.

A NOTICE:

If maintenance and repair work on this device is carried out by persons who are not authorized to do so, If these works are not authorized, the warranty claim against them becomes void.



- After use, close the water supply and open the spray gun to release the water pressure. to drain.
- The hose box is maintenance-free. Do not clean the housing from the inside with water and do not align Do not pour water directly into it.
- The hose reel must not be used for conveying chemicals or other hazardous substances. be used.
- If not in use for an extended period, we recommend storing it in a cool, dry place.
- If storage space is limited, the handle can be folded down by pressing the side locking buttons. become.
- Keep the hose clean or wipe it with a damp cloth if necessary.

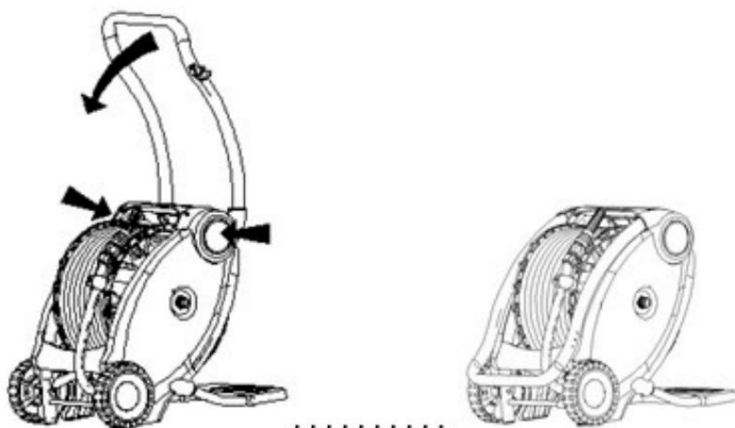


Fig. 7-1: Maintenance

8 Fault table

Mistake	Troubleshooting
Hose jams when retracted.	Pull the hose out slightly and let it dry again. move in.
The hose jams when pulled out. Step on the footrest to push the hose back into place.	Return it to the starting position and pull it out again.
The footrest cannot be activated.	Check if the hose is tangled or uneven. is coiled up. If necessary, pull out a few meters of hose. Slowly pull out and activate the footrest again.



9 spare parts

Risk of injury due to the use of incorrect spare parts!

Using incorrect or faulty spare parts can pose dangers to the operator. This can result in damage and malfunctions.



Stürmer Maschinen GmbH accepts no liability or warranty for damage or malfunctions resulting from failure to observe these operating instructions. For repairs, use only flawless and suitable tools, original spare parts, or series parts expressly approved by Stürmer Maschinen GmbH.

The manufacturer's warranty is void if unauthorized replacement parts are used.

Information about technical customer service

Repairs covered by the warranty may only be carried out by service technicians. Only those authorized by us should perform the work. Use only original spare parts.

9.1 Ordering spare parts

Spare parts can be obtained from specialist retailers.

Send a copy of the spare parts drawing with the marked components to the specialist dealer and

Please provide the following information:

Article number

ÿ **Device designation**

ÿ **Date of manufacture**

ÿ **Position numbers of the components and, if applicable, the associated spare parts drawing number**

ÿ **Quantity**

Desired shipping **method (post, freight, sea, air, express)**

Shipping **address**

Spare parts orders without the above information cannot be processed. If no shipping method is specified, shipping will be at the supplier's discretion.

Information on the device type, article number and year of manufacture can be found on the type plate attached to the water hose cart.

Example

The transport handle for the WSW 45 water hose cart must be ordered. The transport handle has in The spare parts drawing 5, number 3.

When ordering spare parts, please send a copy of the spare parts drawing (5) with the component marked. (Transport handle) and marked position number (3) to the authorized dealer and provide the following information with:

Article number	7560245
ÿ Model name ÿ Position number	Water hose cart WSW 45 3

9.2 Spare parts drawings

Spare parts drawing 1

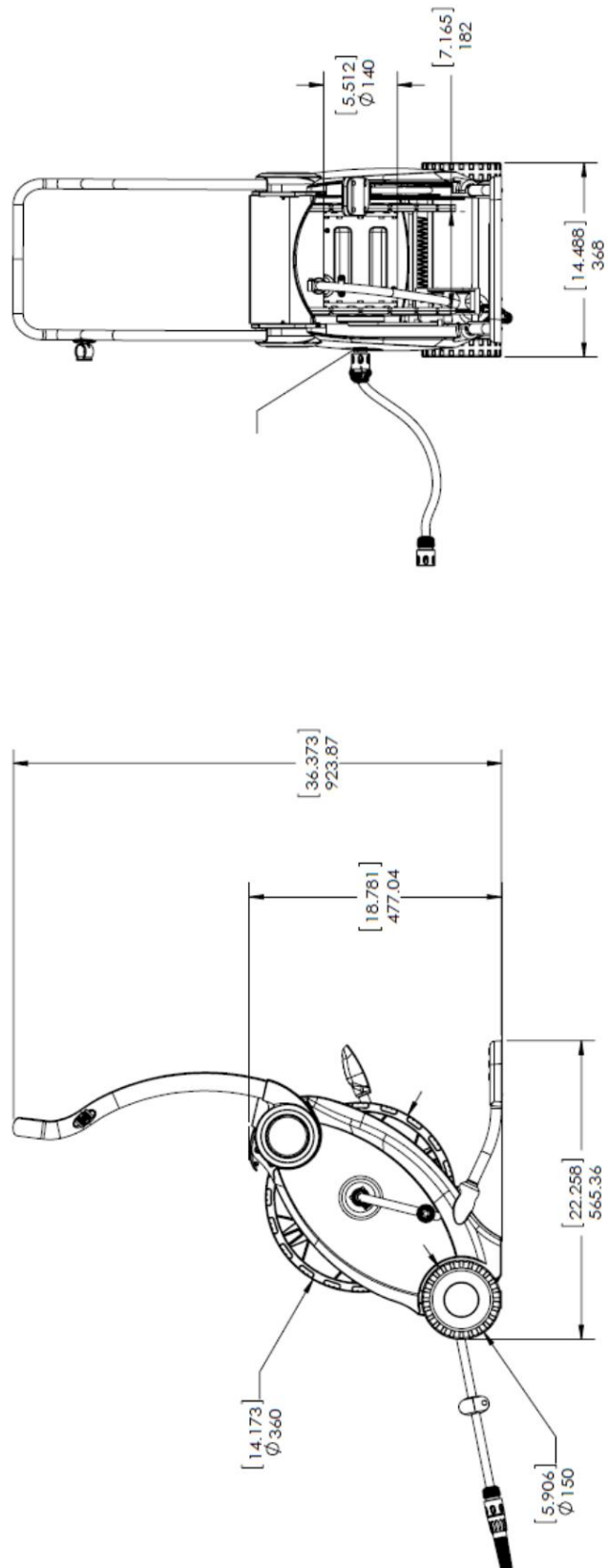


Fig. 9-1: Spare parts drawing 1

Spare parts drawing 2

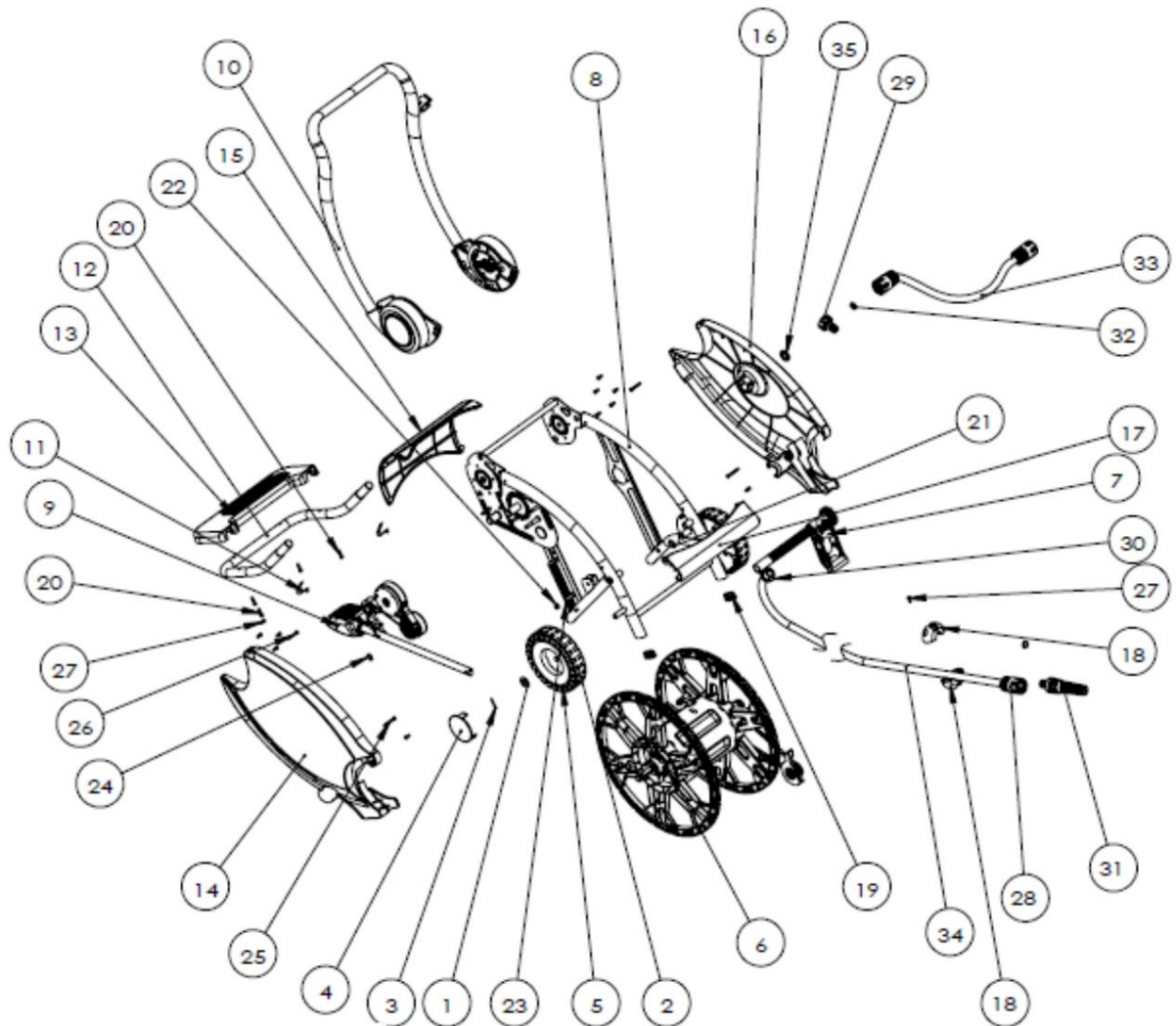


Fig. 9-2: Spare parts drawing 2

Spare parts drawing 3

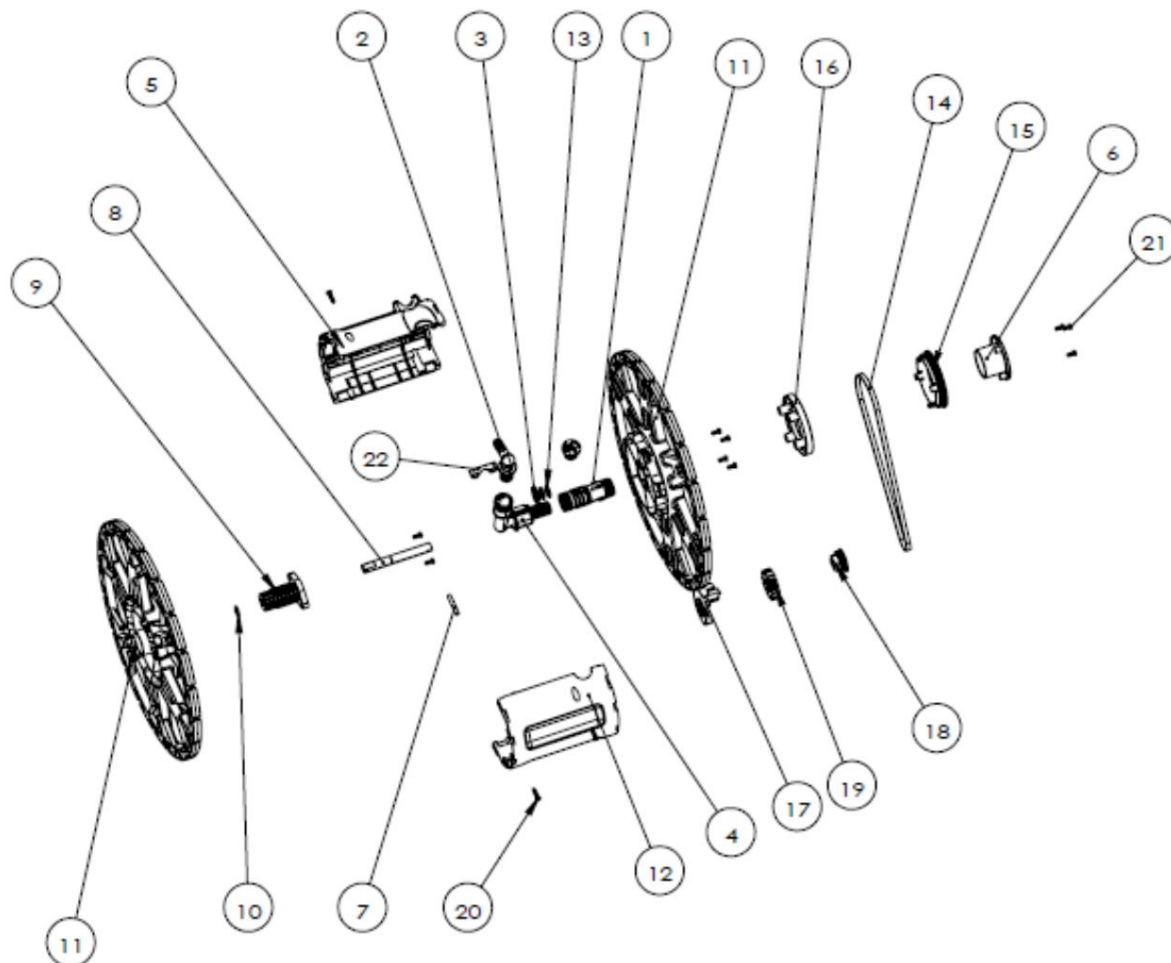


Fig. 9-3: Spare parts drawing 3

Spare parts drawing 4

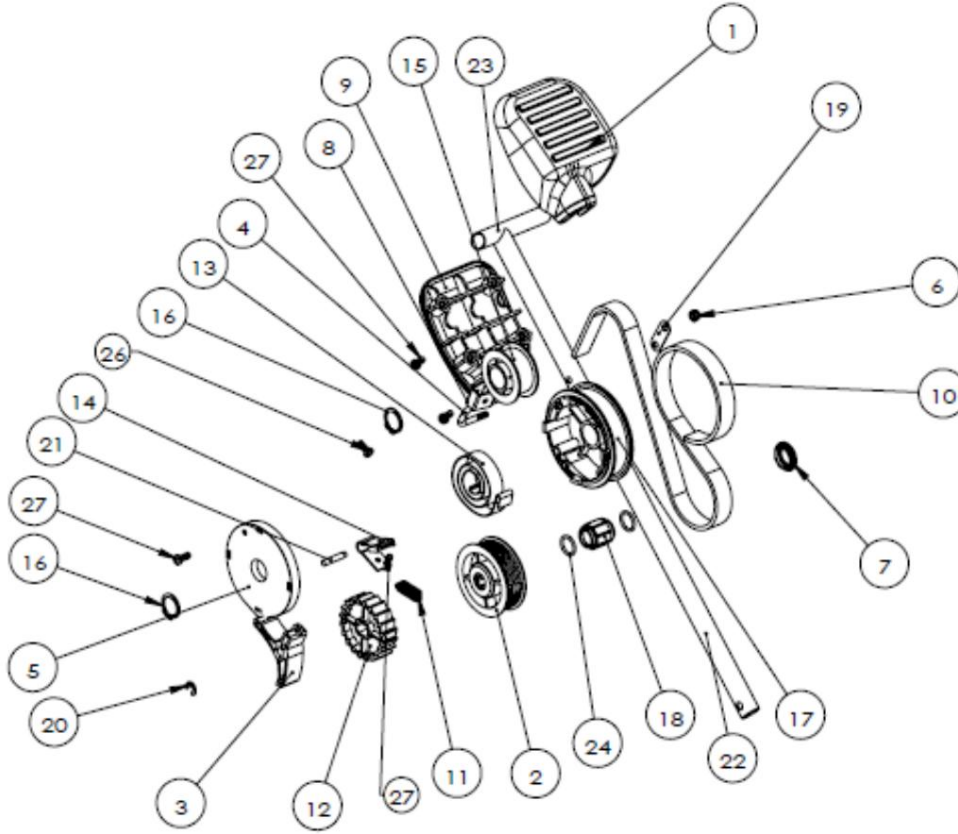


Fig. 9-4: Spare parts drawing 4

Spare parts drawing 5

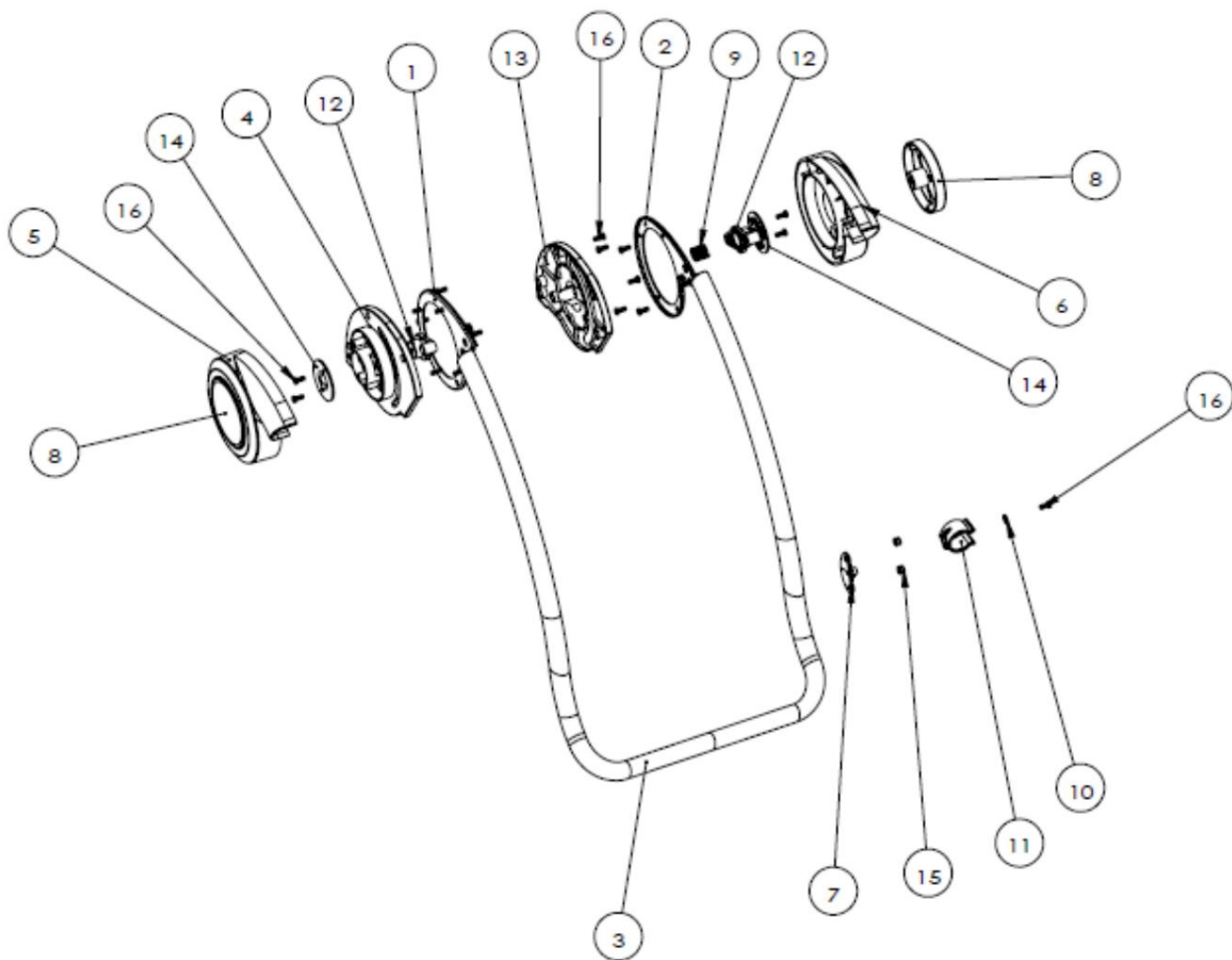


Fig. 9-5: Spare parts drawing 5

Spare parts drawing 6

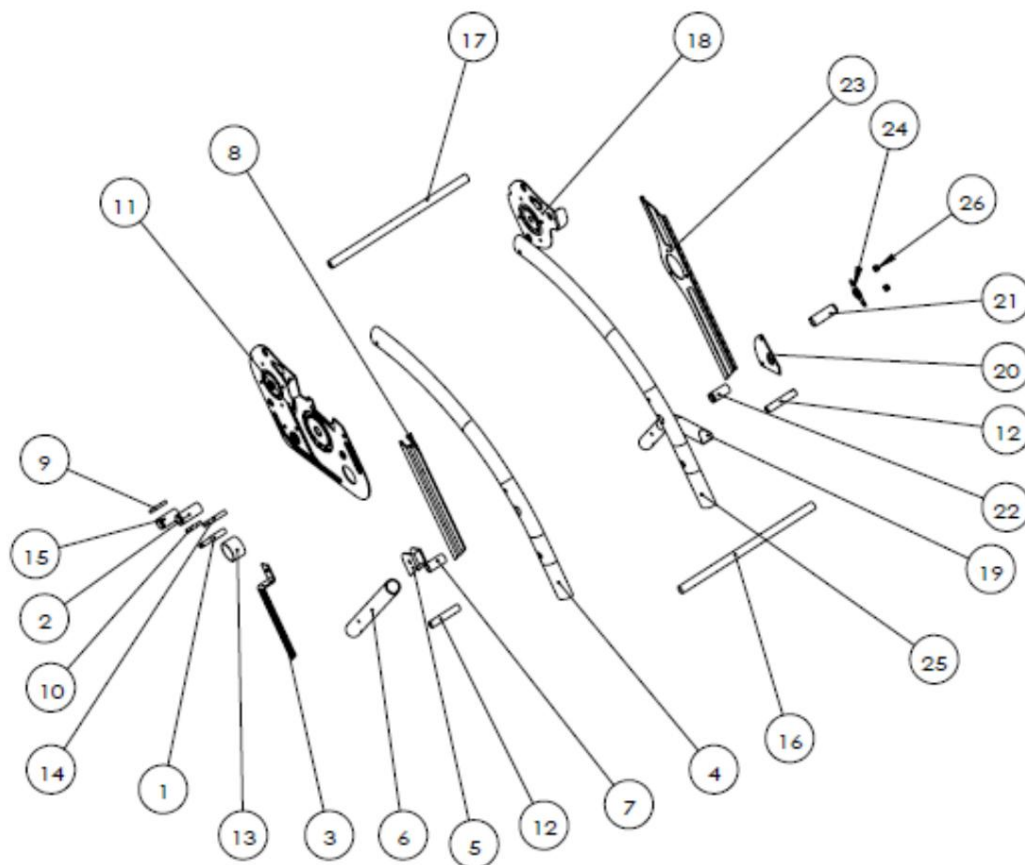


Fig. 9-6: Spare parts drawing 6

Spare parts drawing 7

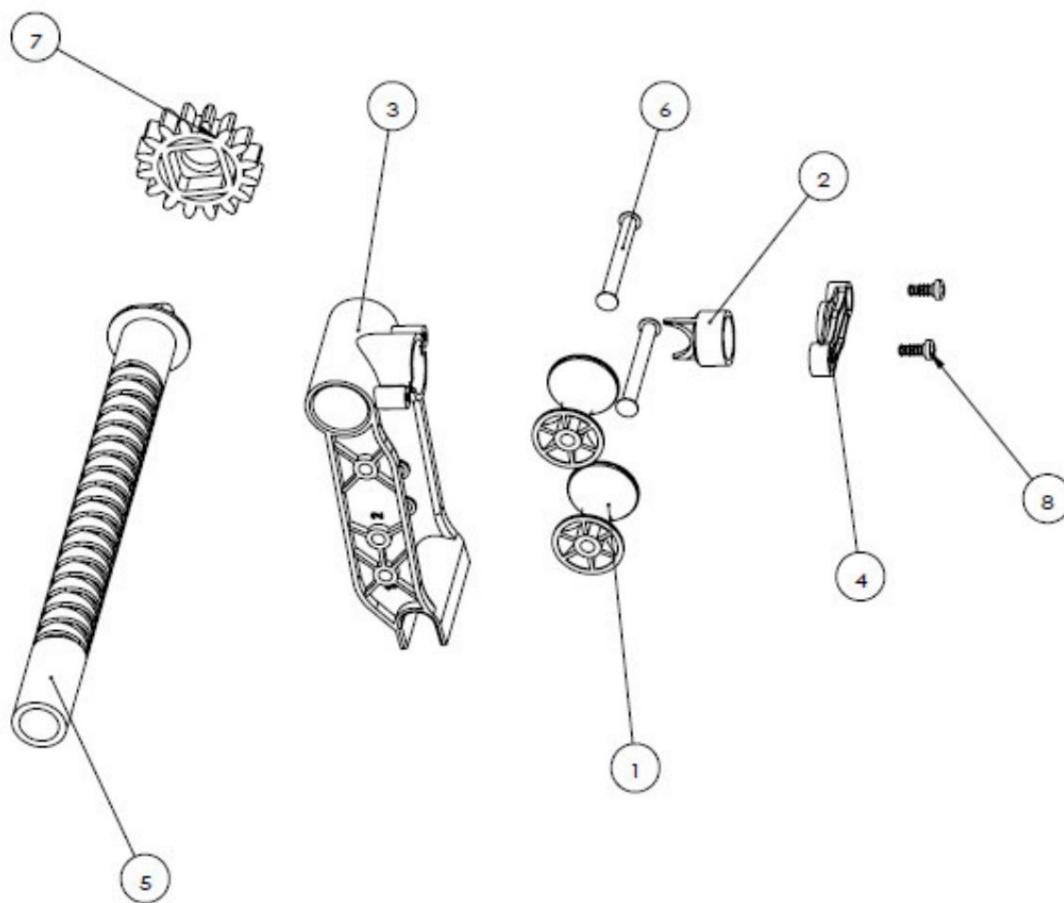


Fig. 9-7: Spare parts drawing 7



10 Product Safety Declaration

Stürmer Maschinen GmbH, Dr.-Robert-Pfleger-Straße 26, D-96103 Hallstadt/Bamberg, hereby declares that the water hose truck WSW 45 / 7560245 has been placed on the market in compliance with all applicable legal requirements in accordance with the Directive on General Product Safety (Product Safety Act – ProdSG).

The water hose cart was designed and manufactured in accordance with recognized engineering standards. In particular, it complied with the safety requirements of the German testing standard EK5/AK8 13-05.02:2017 of the Central Office of the Federal States for Safety Technology (ZLS) for garden irrigation products. This testing standard defines the essential safety requirements for products in this category and serves as a benchmark for TÜV tests and certifications (e.g., TÜV Type Approval) to ensure conformity with national safety standards for the German market.

Furthermore, the product meets the requirements of the following European legislation:

REACH Regulation (EC) No 1907/2006, concerning Registration, Evaluation, Authorisation and Restriction
chemical substances

POP Regulation (EU) 2019/1021, on the restriction of persistent organic pollutants

With this declaration, Stürmer Maschinen GmbH confirms that the WSW 45 water hose truck was manufactured according to recognized engineering standards and complies with the relevant safety standards.

Hallstadt, January 15, 2026

A handwritten signature in blue ink, appearing to read "K. Stürmer".

Kilian Stürmer

Managing Director

11 Appendix

11.1 Copyright

The contents of these instructions are copyrighted and the sole property of Stürmer Maschinen GmbH. Their use is permitted within the context of using the water hose cart. Any use beyond this is not permitted without the manufacturer's written consent. Distribution and reproduction of this document, use and disclosure of its contents are prohibited unless expressly permitted. Violations will result in liability for damages. To protect our products, we register trademark, patent and design rights where possible.

We strongly oppose any infringement of our intellectual property.

Technical specifications are subject to change without notice.

11.2 Storage

DANGER!

Incorrect and improper storage can damage and destroy electrical and mechanical components.



Store the packaged or already unpacked parts only under the intended environmental conditions.

Consult your specialist dealer if the device and accessories need to be stored for longer than three months and under environmental conditions other than those prescribed.

11.3 Disposal instructions / Recycling options Please dispose of your water hose

cart in an environmentally friendly manner by disposing of waste properly and not in the environment.

Please do not simply throw away the packaging and later the used water hose reel, but dispose of both in accordance with the guidelines established by your city/municipal administration or the responsible waste disposal company.

11.3.1 Taking out of service

CAUTION!

Disused devices must be taken out of service immediately and professionally to prevent future misuse and endangering the environment or people. Remove any batteries and rechargeable batteries. If necessary, disassemble the device into manageable and recyclable components. Dispose of the device components according to the designated disposal procedures .



11.3.2 Disposal of the new appliance packaging

All packaging materials and packing aids used for the device are recyclable and must, in principle, be recycled.

The packaging wood can be disposed of or recycled.

Cardboard packaging components can be shredded and placed in the waste paper collection.

The films are made of polyethylene (PE) or the cushioning parts of polystyrene (PS). These materials can be reused after processing if they are taken to a recycling center or your local waste disposal company.

Only pass on packaging material in its purest form so that it can be reused directly.



11.3.3 Disposal of the old appliance

INFORMATION

For your own sake and in the interest of the environment, please ensure that all components of the device are disposed of only via the designated and approved channels.



Please note that electrical appliances contain a variety of recyclable materials as well as environmentally harmful components. Please help ensure that these components are separated and disposed of properly. If in doubt, please contact your local waste disposal authority. For processing, you may need to seek the assistance of a specialized waste management company.

11.3.4 Disposal of electrical and electronic components

Please ensure that the electrical components are disposed of properly and in accordance with legal regulations.

The device contains electrical and electronic components and must not be disposed of as household waste.

According to the European Directive on Waste Electrical and Electronic Equipment and its implementation into national law, used power tools and electrical equipment and machinery must be collected separately and recycled in an environmentally sound manner.

As an operator, you should obtain information about the authorized collection and disposal system that applies to you.

Please ensure that batteries and/or rechargeable batteries are disposed of properly and in accordance with legal regulations. Please only dispose of discharged batteries in the collection boxes at retailers or municipal waste disposal facilities.

11.4 Disposal via municipal collection points Disposal of used electrical and electronic equipment (Applicable in the countries of the European Union and other European countries with a separate collection system for this equipment).



The symbol on the product or its packaging indicates that this product should not be treated as normal household waste, but must be handed in at a collection point for the recycling of electrical and electronic equipment.

By disposing of this product correctly, you are protecting the environment and the health of others. Improper disposal endangers the environment and human health. Recycling helps reduce the consumption of raw materials. For more information on recycling this product, please contact your local council, waste management company, or the store where you purchased it.

12 Product observation

We are obligated to monitor our products even after delivery.

Please tell us anything that is of interest to us:

Changed settings data.

• Experiences with the water hose cart that are important for other users. • Recurring malfunctions.

Stürmer Maschinen GmbH Dr.-

Robert-Pfleger-Str. 26 D-96103
Hallstadt

Fax: (+49)0951 96555-55 Email:

info@stuermer-maschinen.de

13 notes



stürmer
WELT DER
MASCHINEN

Stürmer Maschinen GmbH
Dr.-Robert-Pfleger-Straße 26
D-96103 Hallstadt
+49 951 96 555 - 0
info@stuermer-maschinen.de
www.stuermer-maschinen.de



www.stma.de/youtube-de



www.facebook.com/stuermer.maschinen.gmbh



www.xing.com/companies/stuermermaschinen.gmbh



www.linkedin.com/company/8690471